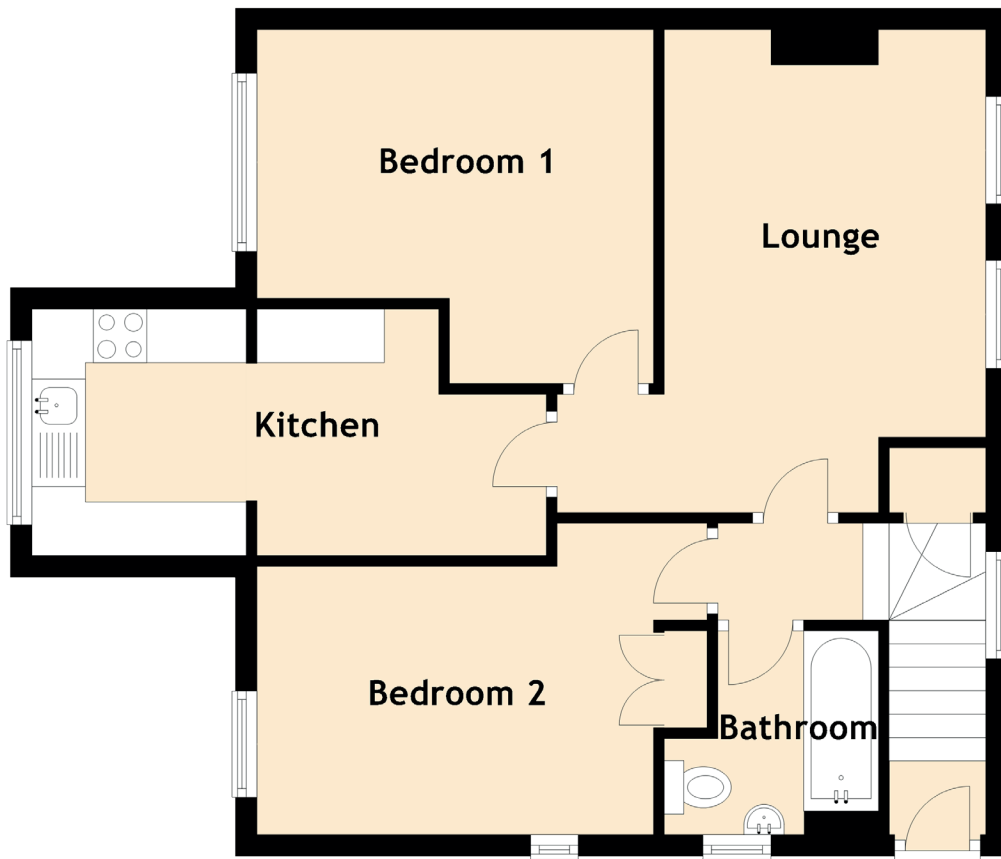


SPECIFICATIONS & DETAILS

FLOOR PLAN, DIMENSIONS & MAP



Approximate Dimensions (Taken from the widest point)

Lounge	4.20m (13'9") x 4.00m (13'1")
Kitchen	4.80m (15'9") x 2.30m (7'7")
Bedroom 1	3.70m (12'2") x 3.30m (10'10")
Bedroom 2	4.20m (13'9") x 2.90m (9'6")
Bathroom	2.10m (6'11") x 1.95m (6'5")

Gross internal floor area (m²): 56m² | EPC Rating: D

