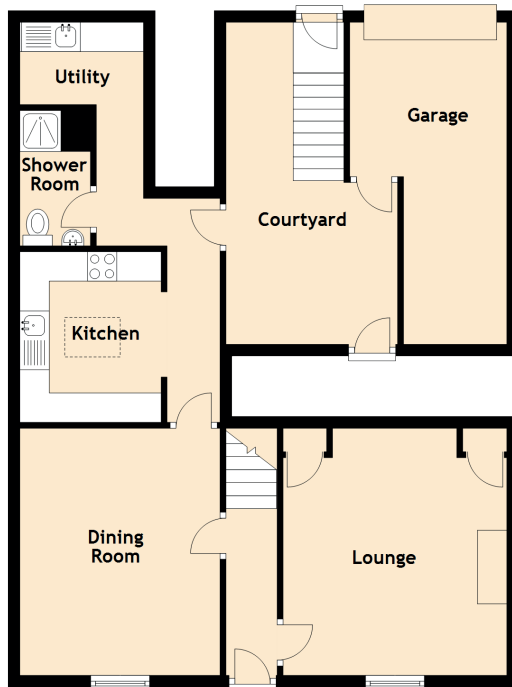


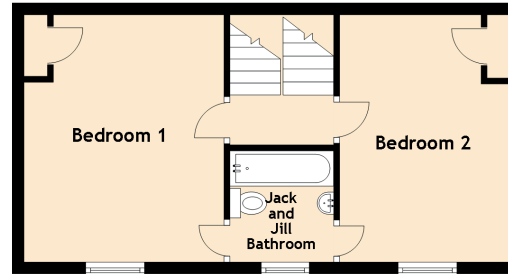
11 Deveronside

BANFF, AB45 1HP

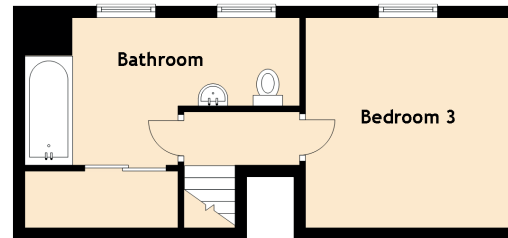
Ground Floor



First Floor



Second Floor



Approximate Dimensions (Taken from the widest point)

Lounge	4.30m (14'1") x 3.80m (12'6")
Dining Room	4.20m (13'9") x 3.40m (11'2")
Kitchen	2.90m (9'6") x 2.40m (7'10")
Utility	2.10m (6'11") x 1.40m (4'7")
Shower Room	2.30m (7'7") x 1.20m (3'11")
Bedroom 1	4.30m (14'1") x 3.40m (11'2")
Jack and Jill Bathroom	2.50m (8'2") x 2.00m (6'7")
Bedroom 2	4.30m (14'1") x 2.90m (9'6")
Bedroom 3	3.50m (11'6") x 3.40m (11'2")
Bathroom	5.10m (16'9") x 2.50m (8'2")