

Approximate Dimensions
(Taken from the widest point)

GROUND FLOOR

Lounge	4.80m (15'9") x 4.80m (15'9")
Kitchen/Diner	5.60m (18'4") x 4.05m (13'3")
Family Room	6.00m (19'8") x 5.10m (16'9")
Dining Room	5.70m (18'8") x 4.10m (13'5")
Bedroom 1	4.30m (14'1") x 3.80m (12'6")
Walk in Wardrobe	2.40m (7'10") x 1.60m (5'3")
En-suite	3.30m (10'10") x 1.80m (5'11")
Utility	2.20m (7'3") x 2.10m (6'11")

WC

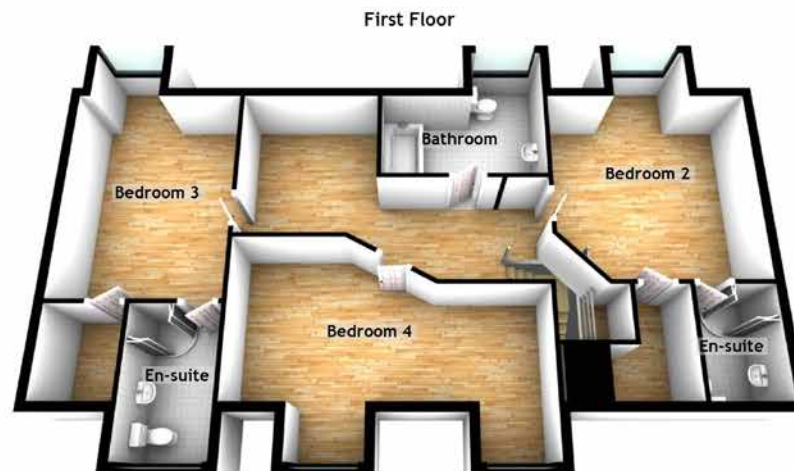
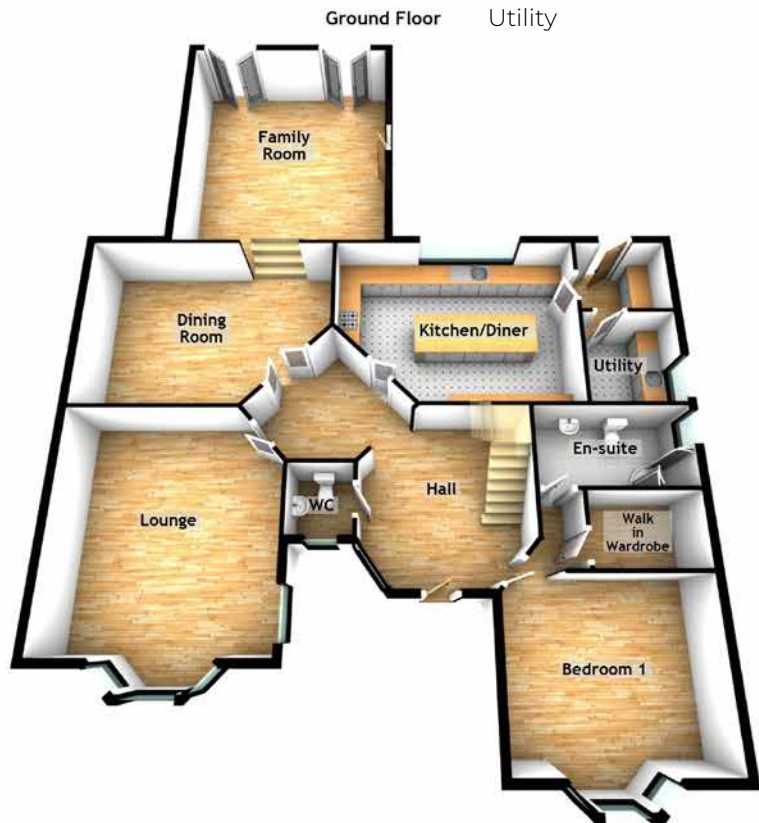
1.40m (4'7") x 1.40m (4'7")

FIRST FLOOR

Bedroom 2	4.26m (14') x 4.20m (13'9")
En-suite	2.30m (7'7") x 1.60m (5'3")
Bedroom 3	4.60m (15'1") x 3.50m (11'6")
En-suite	3.00m (9'10") x 1.80m (5'11")
Bedroom 4	6.40m (21') x 1.10m (3'7")
Bathroom	3.50m (11'6") x 3.30m (10'10")

Gross internal floor area (m²): 245m²

EPC Rating: C



1B Broomhill View

MILLHEUGH, LARKHALL, SOUTH LANARKSHIRE, ML9 1AW