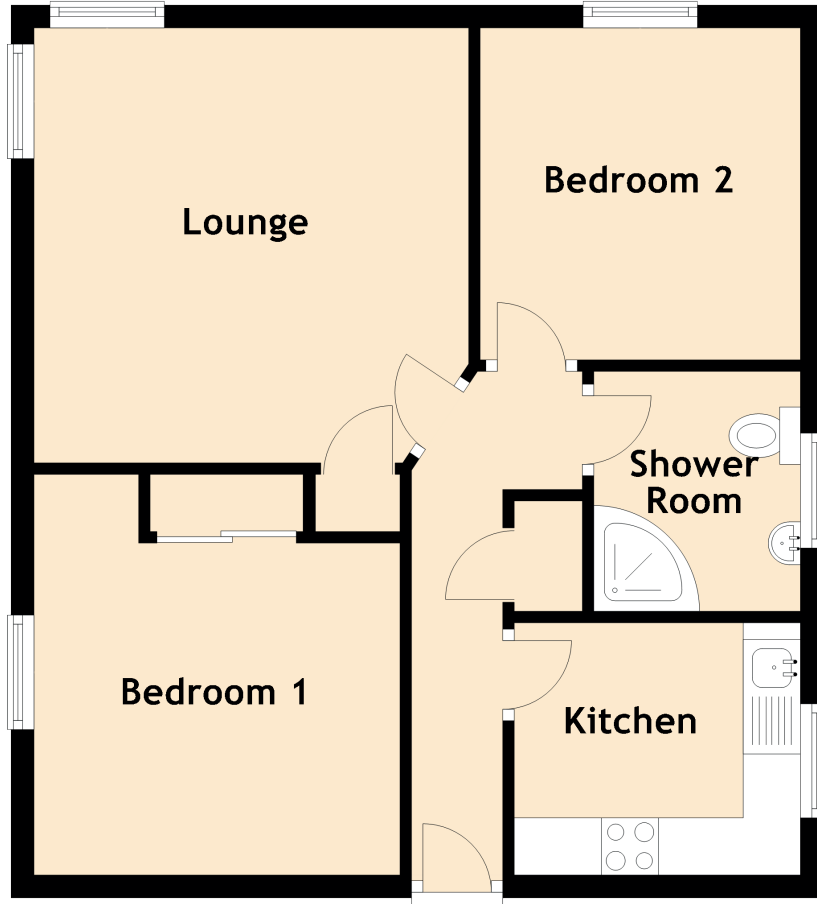


# 2 Pittendrigh Court

INVERURIE, AB51 3JB



Approximate Dimensions (Taken from the widest point)

Lounge	3.80m (12'6") x 3.80m (12'6")
Kitchen	2.50m (8'3") x 2.20m (7'3")
Bedroom 1	3.50m (11'6") x 3.20m (10'6")
Bedroom 2	2.90m (9'6") x 2.80m (9'2")
Shower Room	2.10m (6'11") x 1.80m (5'11")

Gross internal floor area (m<sup>2</sup>): 53m<sup>2</sup> | EPC Rating: D