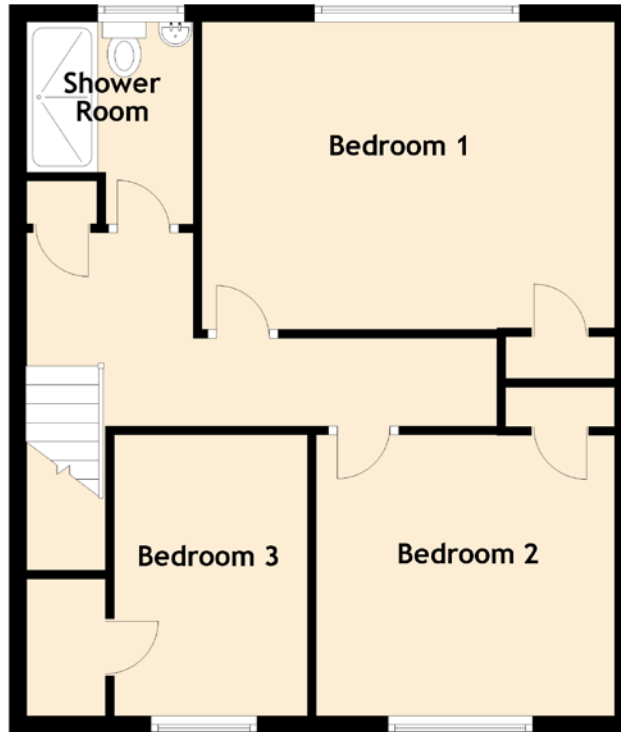
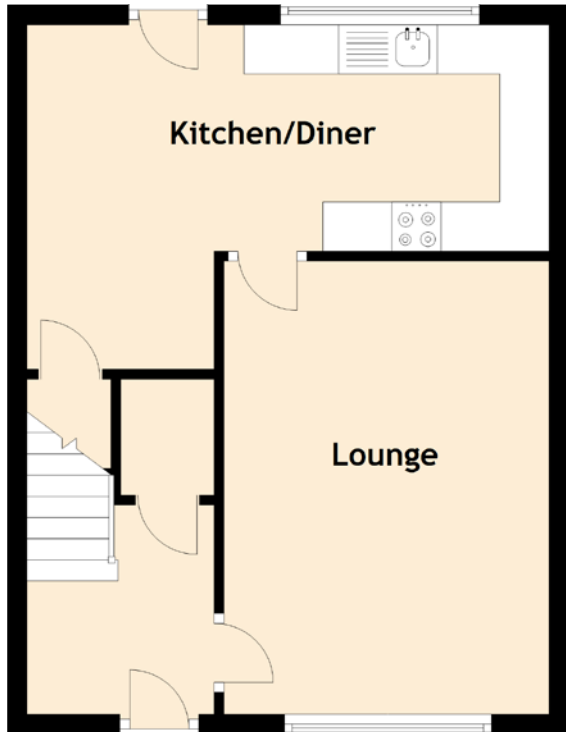


# 6 Elmwood Road



## DETAILS

Approximate Dimensions  
(Taken from the widest point)

Kitchen/Diner	5.30m (17'5") x 2.30m (7'7")
Lounge	4.60m (15'1") x 3.30m (10'10")
Bedroom 1	4.70m (15'5") x 3.50m (11'6")
Bedroom 2	3.40m (11'2") x 3.20m (10'6")
Bedroom 3	3.20m (10'6") x 2.20m (7'3")
Shower Room	2.30m (7'7") x 1.90m (6'3")

Gross internal floor area (m<sup>2</sup>): 85m<sup>2</sup>

EPC Rating: C

Extras (Included in the sale): All fixtures and fittings, including; blinds, curtains, light fittings, carpets and fitted floor coverings.