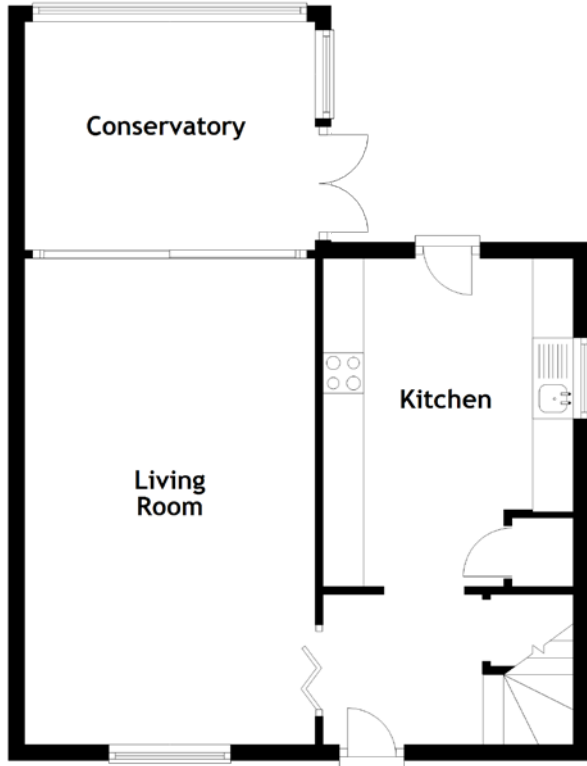


FLOOR PLAN, DIMENSIONS & MAP



Approximate Dimensions (Taken from the widest point)

Living Room	5.97m (19'7") x 3.59m (11'9")
Conservatory	3.59m (11'9") x 2.85m (9'4")
Kitchen	4.05m (13'3") x 3.09m (10'2")
Master Bedroom	4.60m (15'1") x 2.76m (9'1")

Bedroom 2	3.36m (11') x 3.14m (10'4")
Bedroom 3	2.85m (9'4") x 2.25m (7'5")
Bathroom	2.11m (6'11") x 1.70m (5'7")

Gross internal floor area (m²): 89m²

EPC Rating: C

