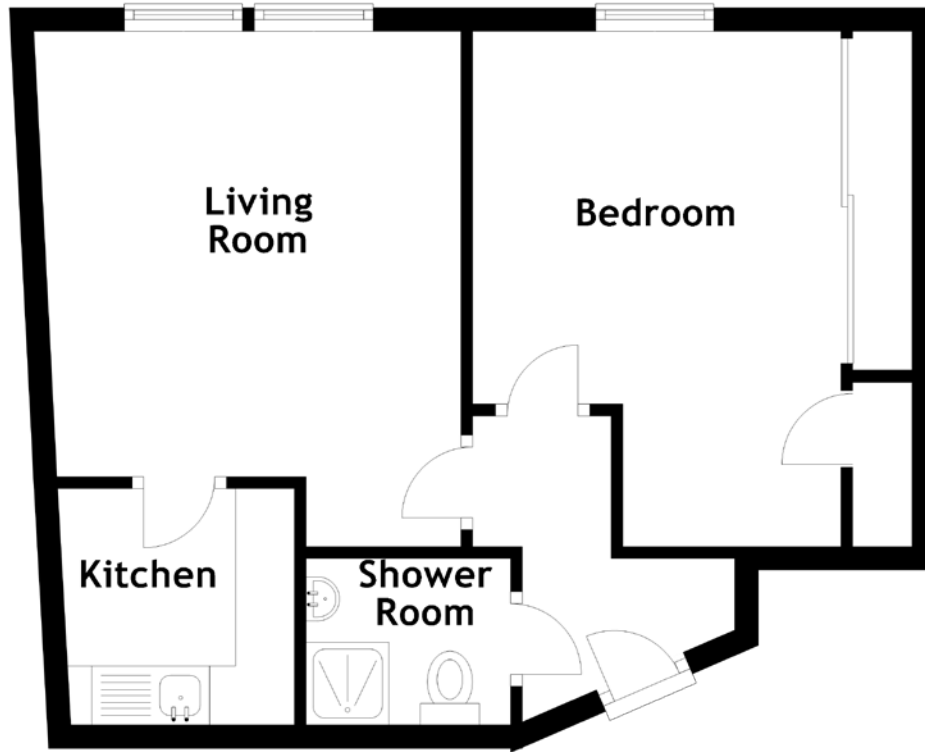


FLOOR PLAN, DIMENSIONS & MAP



Approximate Dimensions
(Taken from the widest point)

Bedroom 4.36m (14'4") x 3.72m (12'2")
Shower Room 1.73m (5'8") x 1.41m (4'8")

Living Room 4.36m (14'4") x 3.62m (11'11")
Kitchen 2.19m (7'2") x 2.01m (6'7")

Gross internal floor area (m²): 39m²
EPC Rating: D

