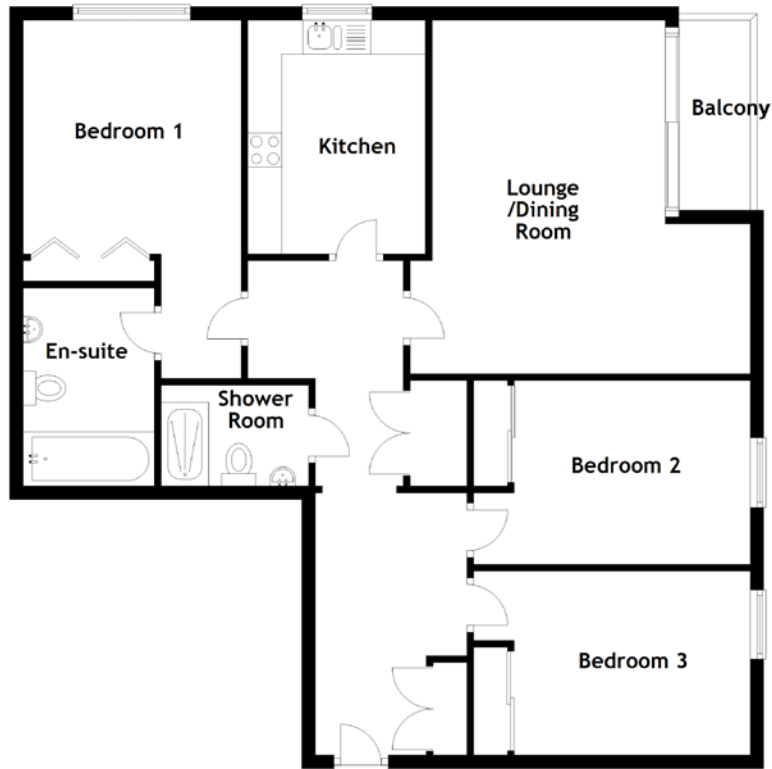


FLOOR PLAN, DIMENSIONS & MAP



Approximate Dimensions (Taken from the widest point)

Lounge/Dining Room 5.10m (16'9") x 5.01m (16'5")
 Kitchen 3.43m (11'3") x 2.61m (8'7")
 Bedroom 1 5.26m (17'3") x 3.21m (10'6")
 En-suite 2.91m (9'7") x 1.93m (6'4")

Bedroom 2 4.07m (13'4") x 2.70m (8'10")
 Bedroom 3 4.07m (13'4") x 2.70m (8'10")
 Shower Room 2.17m (7'1") x 1.48m (4'10")

Gross internal floor area (m2): 97m²
 EPC Rating: B

