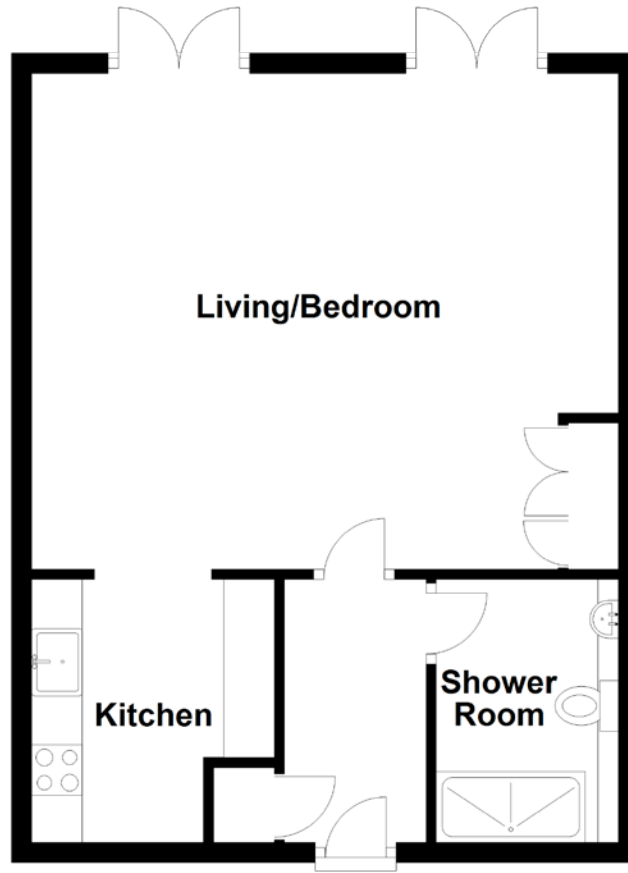


FLOOR PLAN, DIMENSIONS & MAP



Approximate Dimensions (Taken from the widest point)	Shower Room	2.60m (8'6") x 1.80m (5'11")
Living/Bedroom	5.80m (19') x 4.90m (16'1")	Gross internal floor area (m ²): 44m ²
Kitchen	2.60m (8'6") x 2.40m (7'10")	EPC Rating: B

