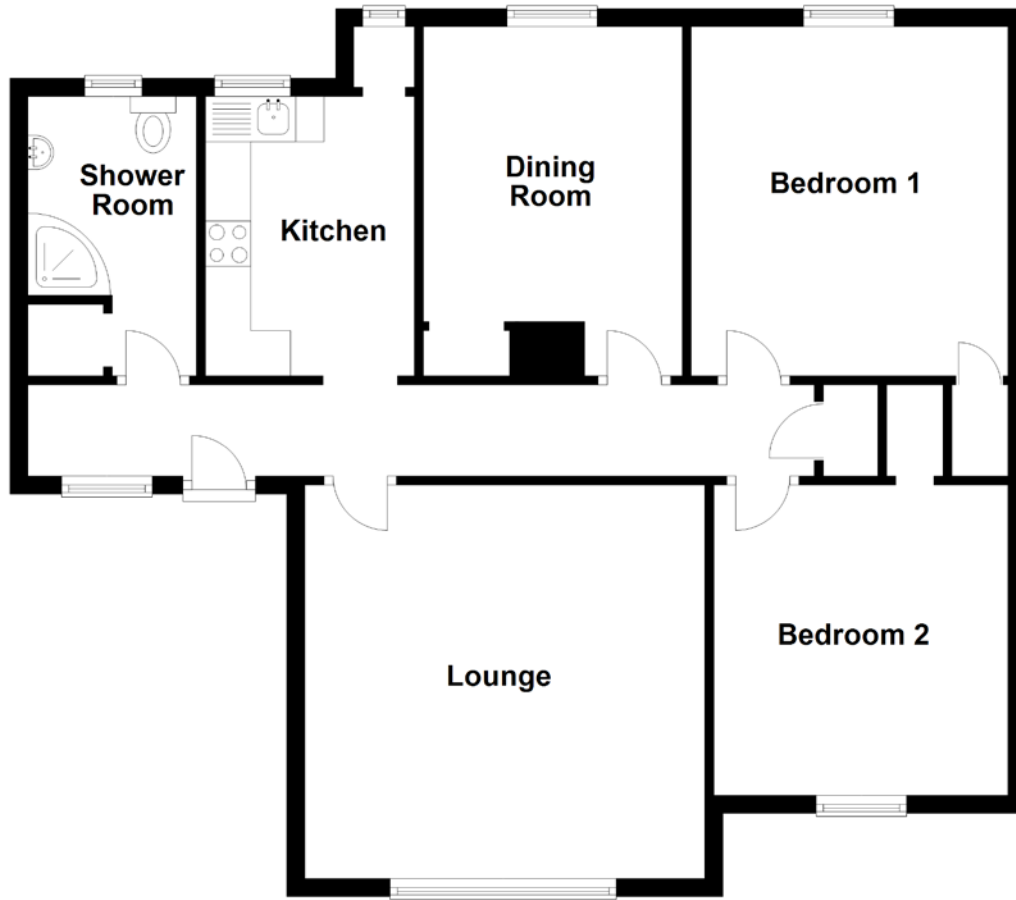


FLOOR PLAN, DIMENSIONS & MAP



Approximate Dimensions
(Taken from the widest point)

Lounge 4.42m (14'6") x 4.35m (14'3")
Kitchen 3.09m (10'2") x 2.31m (7'7")
Dining Room 3.86m (12'8") x 2.86m (9'5")

Bedroom 1 3.86m (12'8") x 3.50m (11'6")
Bedroom 2 3.43m (11'3") x 3.25m (10'8")
Shower Room 3.15m (10'4") x 1.86m (6'1")

Gross internal floor area (m²): 78m²
EPC Rating: C

