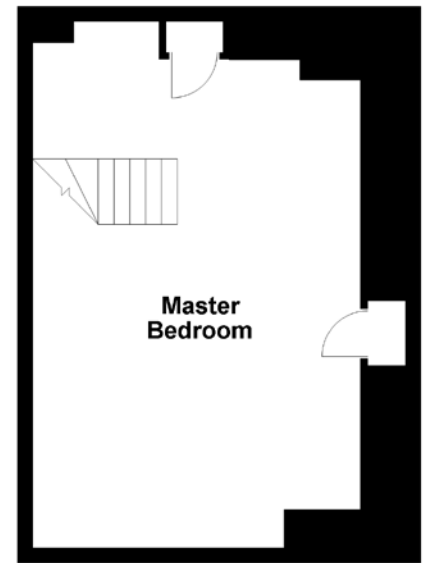
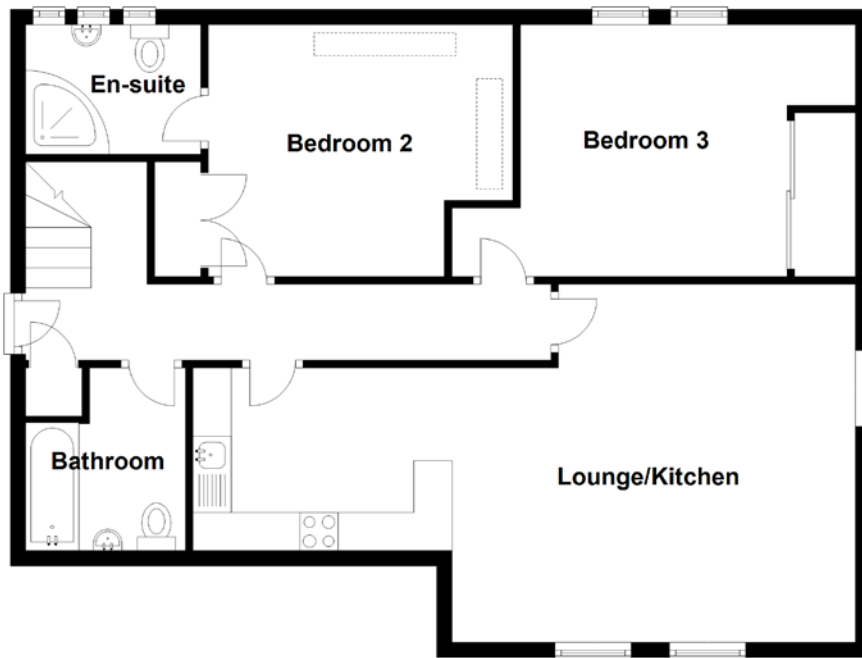


# FLOOR PLAN, DIMENSIONS & MAP



Approximate Dimensions (Taken from the widest point)

Lounge/Kitchen	8.70m (28'7") x 3.60m (11'10")
Master Bedroom	6.90m (22'8") x 4.30m (14'1")
Bedroom 2	4.00m (13'1") x 3.31m (10'10")
Bedroom 3	3.50m (11'6") x 3.31m (10'10")
Bathroom	2.40m (7'10") x 2.10m (6'11")

Gross internal floor area (m<sup>2</sup>): 77m<sup>2</sup>

EPC Rating: C

Loft conversion information (Architects drawings and planning permissions) are available on request.

