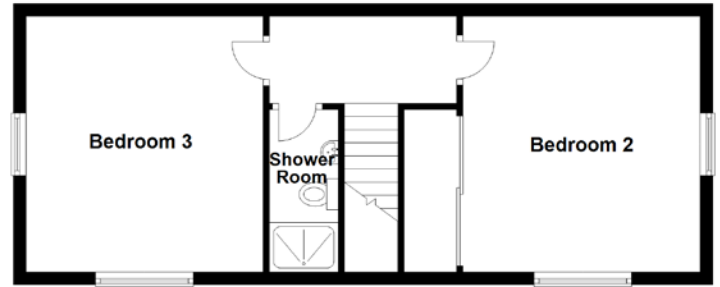
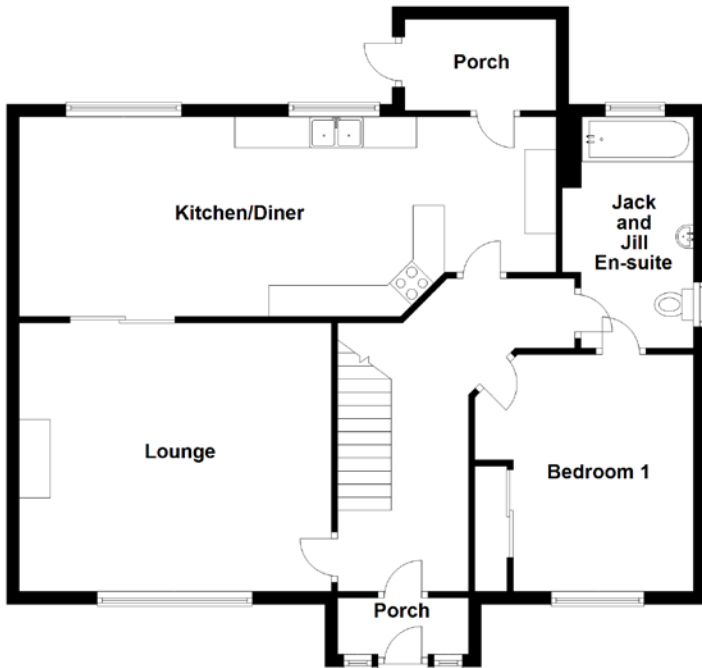


FLOOR PLAN, DIMENSIONS & MAP



Approximate Dimensions
(Taken from the widest point)

Lounge	5.00m (16'5") x 4.30m (14'1")
Kitchen/Diner	8.60m (28'3") x 3.20m (10'6")
Bedroom 1	3.50m (11'6") x 3.40m (11'2")
Jack and Jill En-suite	3.50m (11'6") x 2.10m (6'11")
Bedroom 2	4.10m (13'5") x 4.10m (13'5")

Bedroom 3	4.10m (13'5") x 3.80m (12'6")
Shower Room	2.60m (8'6") x 1.20m (3'11")

Gross internal floor area (m²): 136m²
EPC Rating: D

Extras (Included in the sale): One shed, double external power socket, two external water taps.

