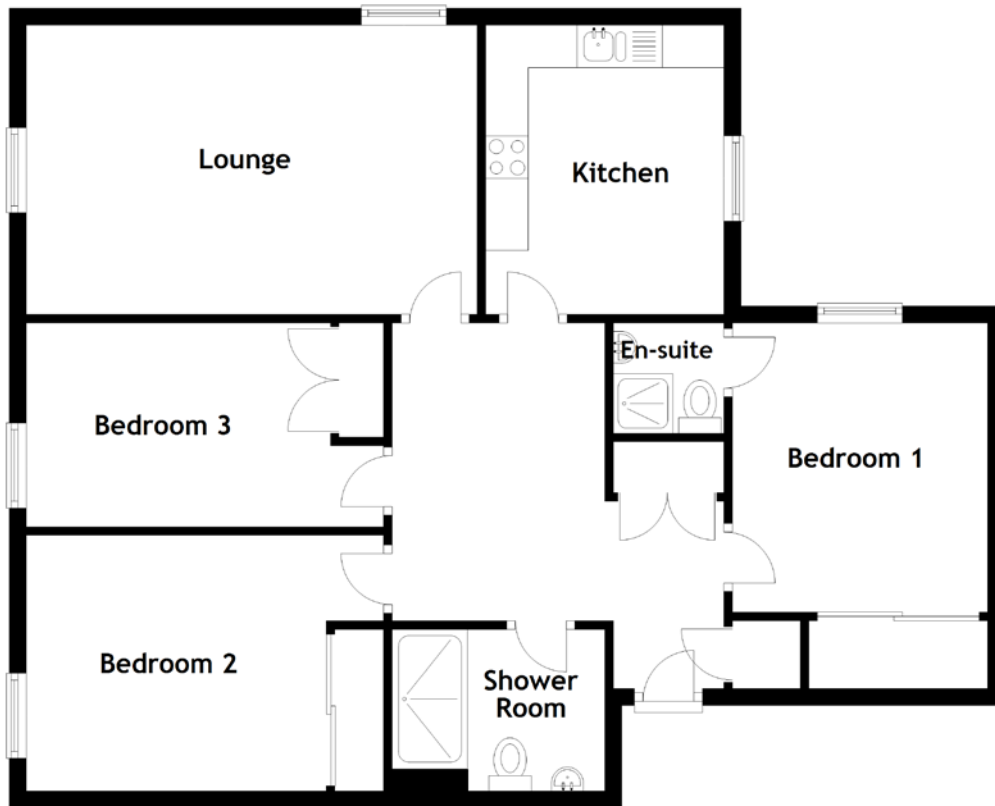


FLOOR PLAN, DIMENSIONS & MAP



Approximate Dimensions
(Taken from the widest point)

Lounge 5.30m (17'5") x 3.40m (11'2")
Kitchen 3.40m (11'2") x 2.80m (9'2")
Bedroom 1 3.40m (11'2") x 3.00m (9'10")

Bedroom 2 4.20m (13'9") x 3.00m (9'10")
Bedroom 3 4.20m (13'9") x 2.40m (7'10")
Shower Room 2.50m (8'2") x 1.90m (6'3")

Gross internal floor area (m²): 88m²
EPC Rating: C

