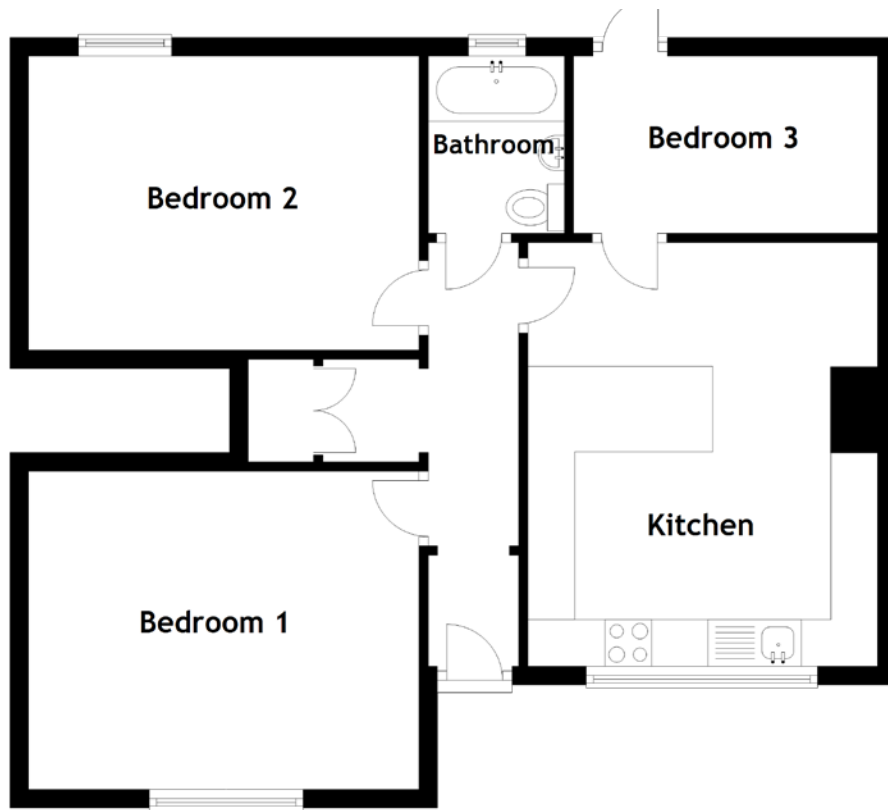


FLOOR PLAN, DIMENSIONS & MAP



Approximate Dimensions (Taken from the widest point)

Kitchen 4.54m (14'11") x 3.75m (12'4")
Bedroom 1 4.19m (13'9") x 3.41m (11'2")
Bedroom 2 4.15m (13'7") x 3.15m (10'4")

Bedroom 3 3.26m (10'8") x 1.83m (6')
Bathroom 1.90m (6'3") x 1.46m (4'9")

Gross internal floor area (m²): 66m²
EPC Rating: C

