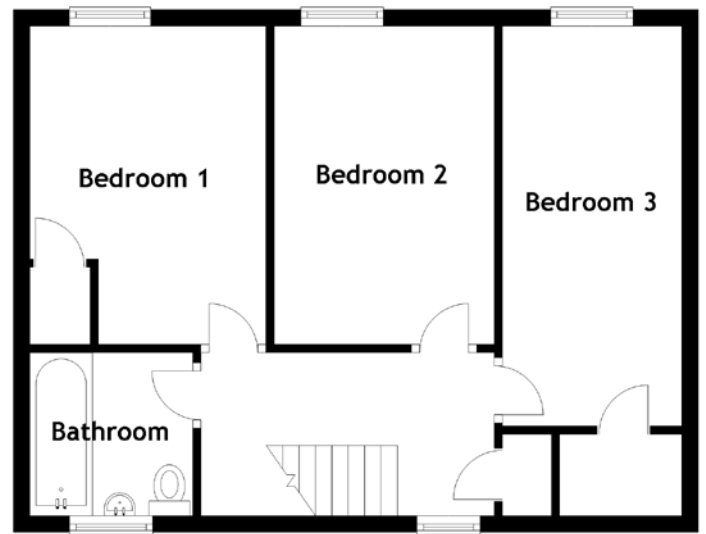
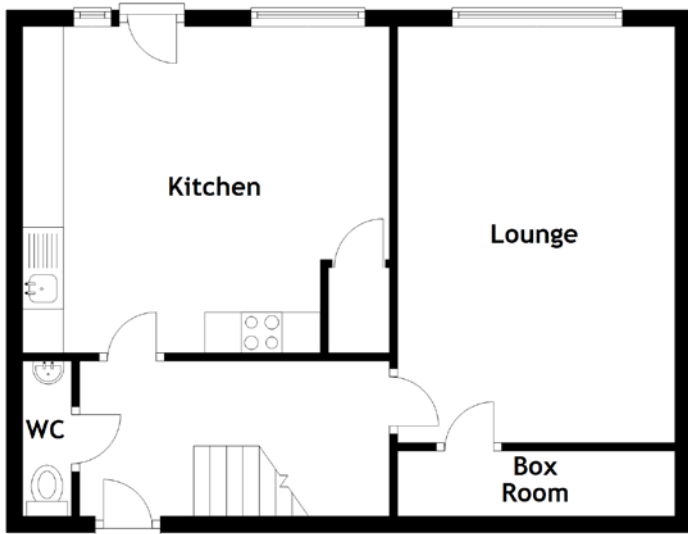


FLOOR PLAN, DIMENSIONS & MAP



Approximate Dimensions (Taken from the widest point)

Lounge	5.10m (16'9") x 3.40m (11'2")
Box Room	3.40m (11'2") x 0.80m (2'7")
Kitchen	4.50m (14'9") x 4.00m (13'1")
Bedroom 1	3.90m (12'10") x 2.90m (9'6")

Bedroom 2	3.90m (12'10") x 2.70m (8'10")
Bedroom 3	4.90m (16'1") x 2.20m (7'3")
Bathroom	2.00m (6'7") x 1.80m (5'11")

Gross internal floor area (m²): 95m²

EPC Rating: D

