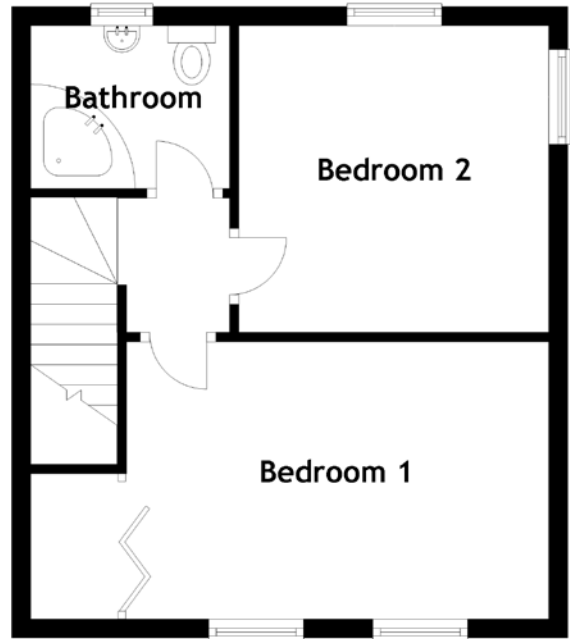
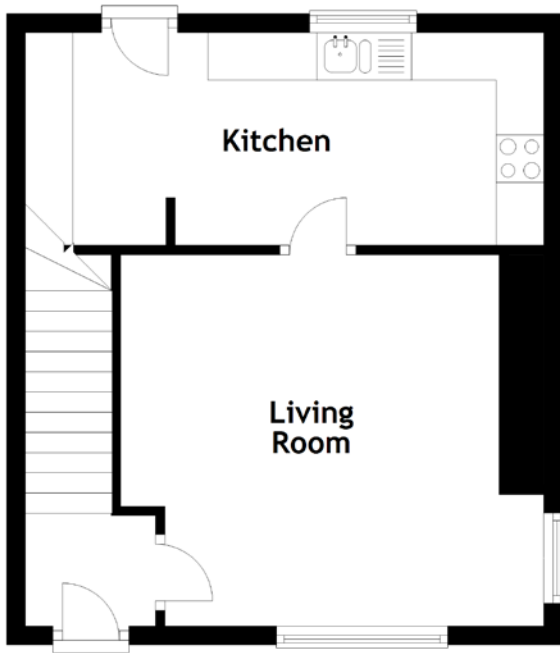


# FLOOR PLAN, DIMENSIONS & MAP



Approximate Dimensions (Taken from the widest point)

Living Room 3.99m (13'1") x 3.91m (12'10")  
 Kitchen 5.46m (17'11") x 2.24m (7'4")  
 Bedroom 1 4.38m (14'4") x 3.08m (10'1")

Bedroom 2  
 Bathroom

3.23m (10'7") x 3.17m (10'5")  
 2.10m (6'10") x 1.72m (5'8")

Gross internal floor area (m<sup>2</sup>): 71m<sup>2</sup>  
 EPC Rating: D

