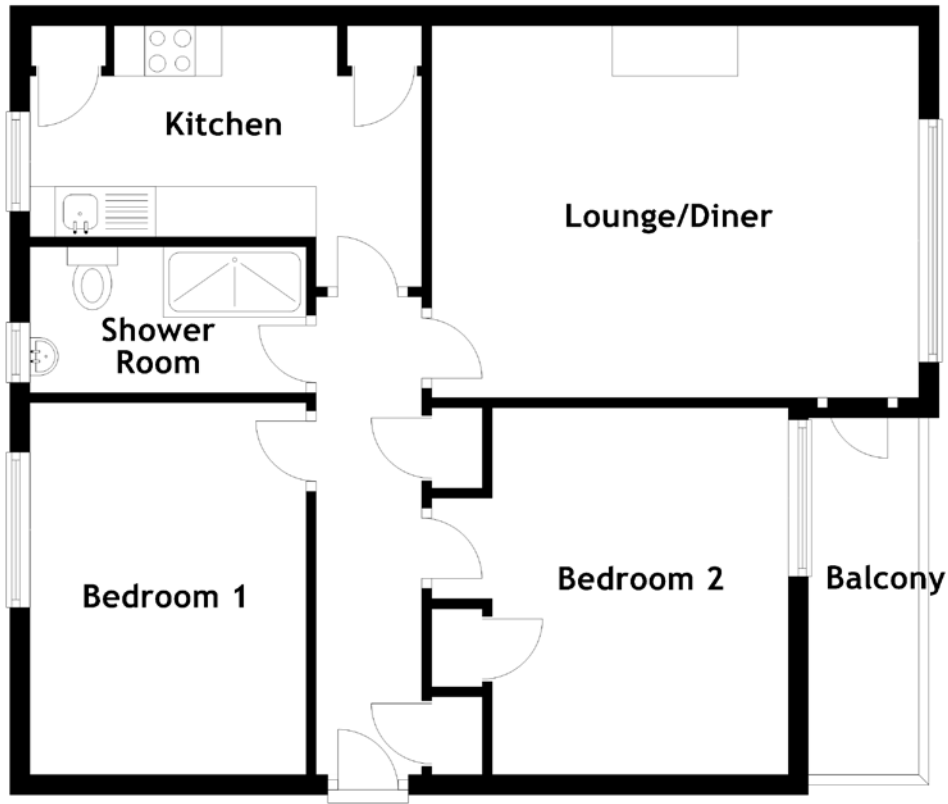


FLOOR PLAN, DIMENSIONS & MAP



Approximate Dimensions
(Taken from the widest point)

Lounge/Diner 4.85m (15'11") x 3.70m (12'2")
 Balcony 3.65m (12') x 1.20m (3'11")
 Kitchen 3.90m (12'10") x 2.60m (8'6")

Bedroom 1 3.70m (12'2") x 2.75m (9')
 Bedroom 2 3.65m (12') x 3.15m (10'4")
 Shower Room 2.80m (9'2") x 1.45m (4'9")

Gross internal floor area (m²): 64m²
 EPC Rating: C

