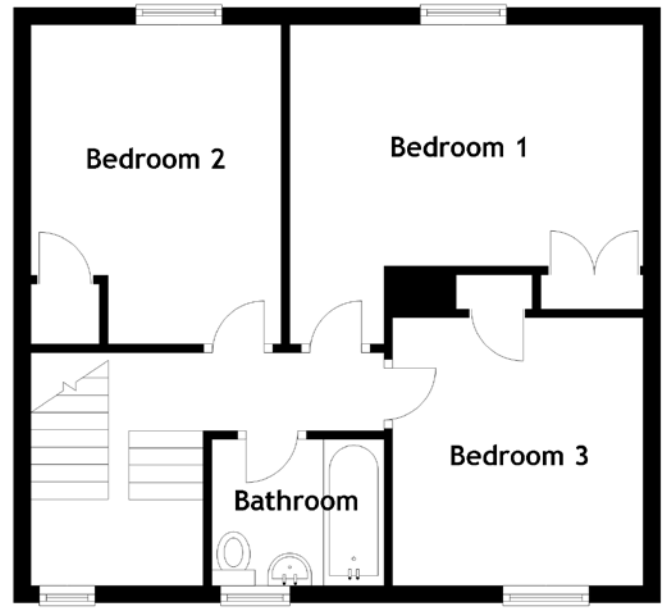
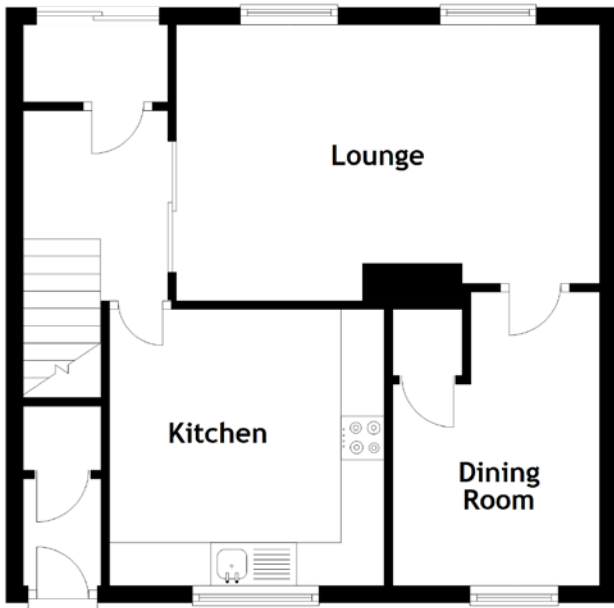


FLOOR PLAN, DIMENSIONS & MAP



Approximate Dimensions (Taken from the widest point)

| | |
|-------------|-------------------------------|
| Lounge | 4.90m (16'1") x 3.20m (10'6") |
| Dining Room | 3.40m (11'2") x 2.40m (7'10") |
| Kitchen | 3.20m (10'6") x 3.18m (10'5") |
| Bedroom 1 | 4.10m (13'5") x 3.70m (12'2") |

| | |
|-----------|------------------------------|
| Bedroom 2 | 3.70m (12'2") x 2.90m (9'6") |
| Bedroom 3 | 3.10m (10'2") x 2.90m (9'6") |
| Bathroom | 2.00m (6'7") x 1.70m (5'7") |

Gross internal floor area (m²): 94m²
EPC Rating: E

