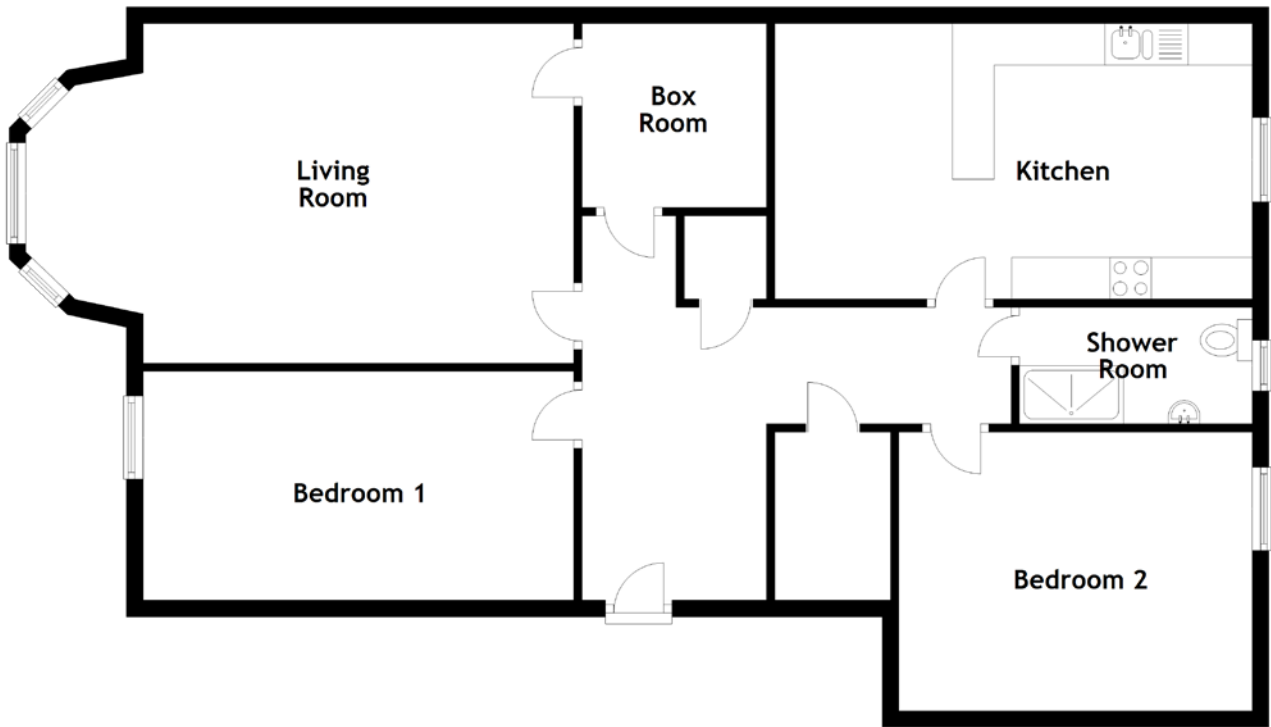


FLOOR PLAN, DIMENSIONS & MAP



Approximate Dimensions
(Taken from the widest point)

Living Room 6.59m (21'7") x 4.08m (13'5")
 Box Room 2.22m (7'3") x 2.21m (7'3")
 Kitchen 5.74m (18'10") x 3.31m (10'10")

Shower Room 2.80m (9'2") x 1.40m (4'7")
 Bedroom 1 5.18m (17') x 2.75m (9')
 Bedroom 2 4.25m (13'11") x 3.35m (11')

Gross internal floor area (m²): 100m²
 EPC Rating: C

