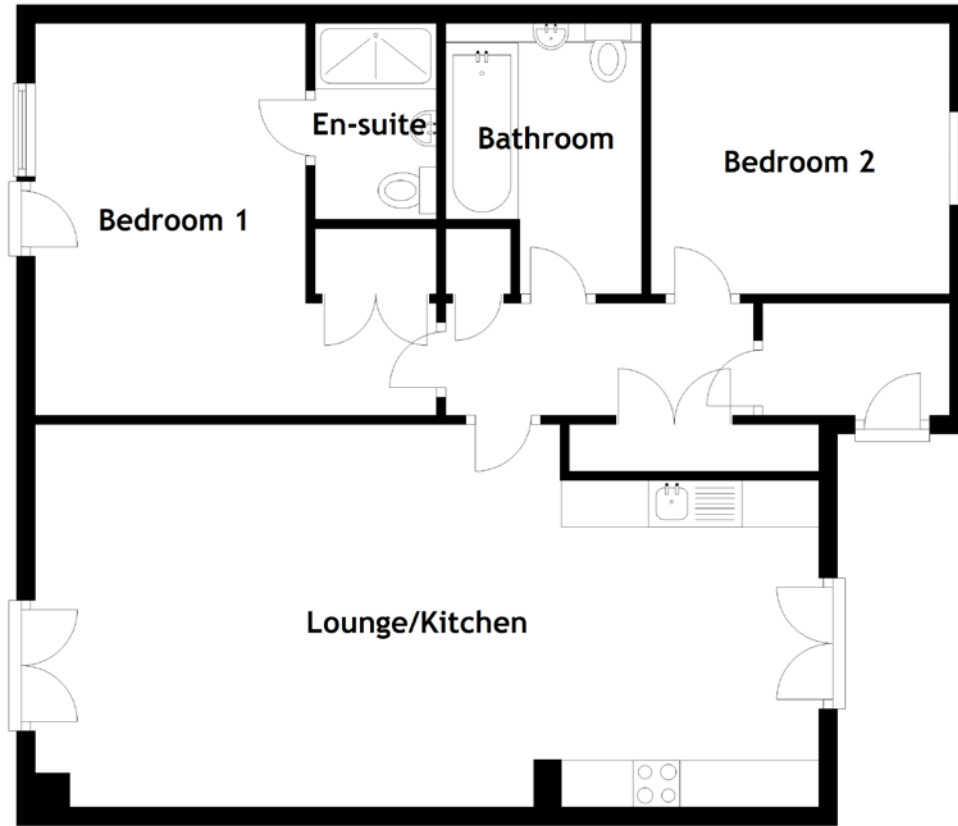


FLOOR PLAN, DIMENSIONS & MAP



Approximate Dimensions
(Taken from the widest point)

Lounge/Kitchen 8.40m (27'7") x 4.10m (13'5")
Bedroom 1 4.30m (14'1") x 4.20m (13'9")

En-suite 2.10m (6'11") x 1.30m (4'3")
Bedroom 2 3.20m (10'6") x 2.70m (8'10")
Bathroom 2.90m (9'6") x 2.10m (6'11")

Gross internal floor area (m²): 78m² | EPC Rating: B

