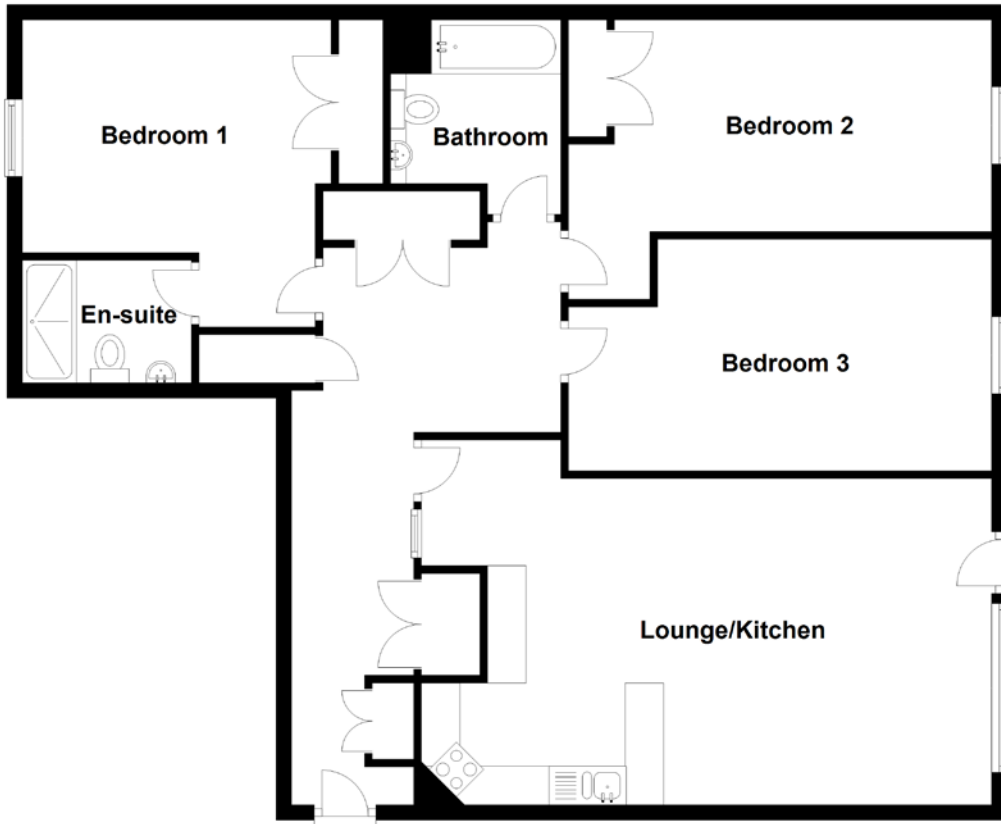


FLOOR PLAN, DIMENSIONS & MAP



Approximate Dimensions
(Taken from the widest point)

Lounge/Kitchen 7.74m (25'5") x 4.73m (15'6")
Bathroom 2.52m (8'3") x 2.21m (7'3")
Bedroom 1 3.98m (13'1") x 3.80m (12'6")

En-suite 2.19m (7'2") x 1.59m (5'2")
Bedroom 2 5.49m (18') x 3.62m (11'11")
Bedroom 3 5.49m (18') x 3.00m (9'10")

Gross internal floor area (m²): 110m²
EPC Rating: B

