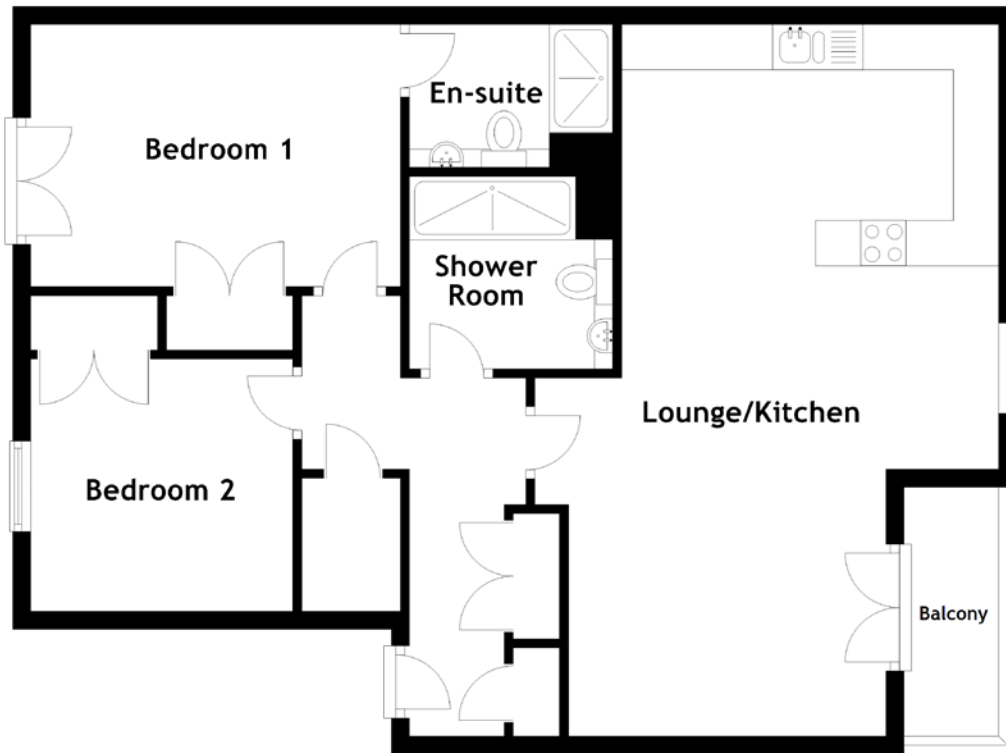


# FLOOR PLAN, DIMENSIONS & MAP



Approximate Dimensions  
(Taken from the widest point)

Lounge/Kitchen 7.87m (25'10") x 5.13m (16'10")  
 Bedroom 1 4.09m (13'5") x 2.90m (9'6")  
 En-suite 2.25m (7'5") x 1.58m (5'2")

Bedroom 2 2.90m (9'6") x 2.79m (9'2")  
 Shower Room 2.25m (7'5") x 2.13m (7')  
 Balcony 2.85m (9'4") x 1.15m (3'9")

Gross internal floor area (m<sup>2</sup>): 76m<sup>2</sup>  
 EPC Rating: C

