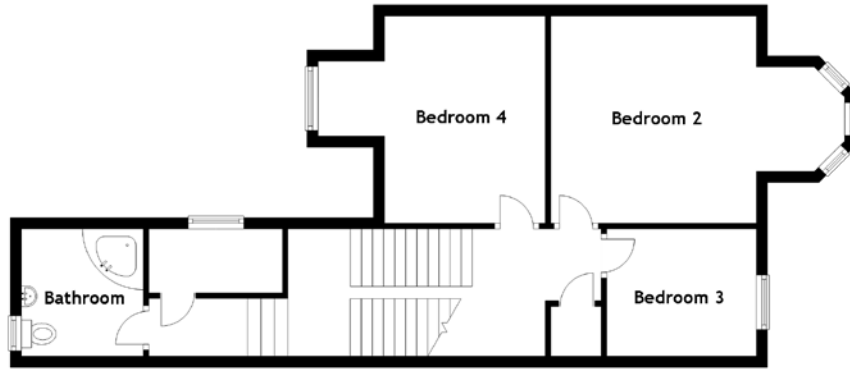
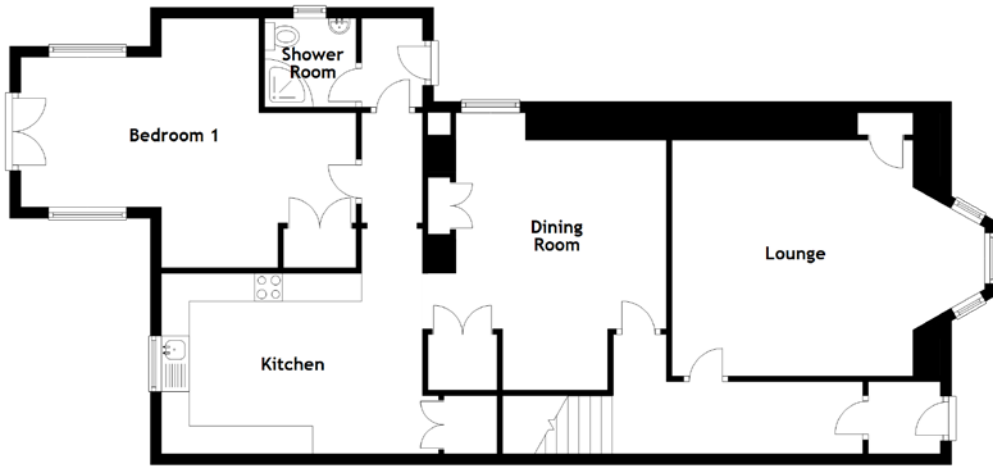


# FLOOR PLAN, DIMENSIONS & MAP



Approximate Dimensions (Taken from the widest point)

Lounge 5.65m (18'6") x 4.25m (13'11")  
 Dining Room 4.50m (14'9") x 4.30m (14'1")  
 Kitchen 4.71m (15'5") x 3.25m (10'8")  
 Shower Room 1.65m (5'5") x 1.60m (5'3")  
 Bedroom 1 6.05m (19'10") x 4.50m (14'9")

Bedroom 3 2.70m (8'10") x 2.05m (6'9")  
 Bedroom 2 5.30m (17'5") x 3.74m (12'3")  
 Bedroom 4 4.10m (13'5") x 3.45m (11'4")  
 Bathroom 2.30m (7'7") x 2.20m (7'3")

Gross internal floor area (m<sup>2</sup>): 143m<sup>2</sup>  
 EPC Rating: D

