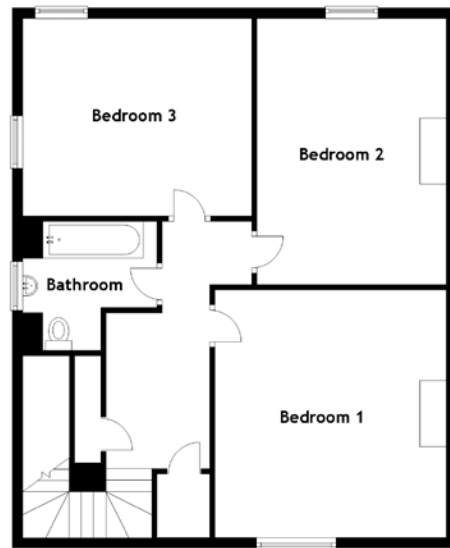
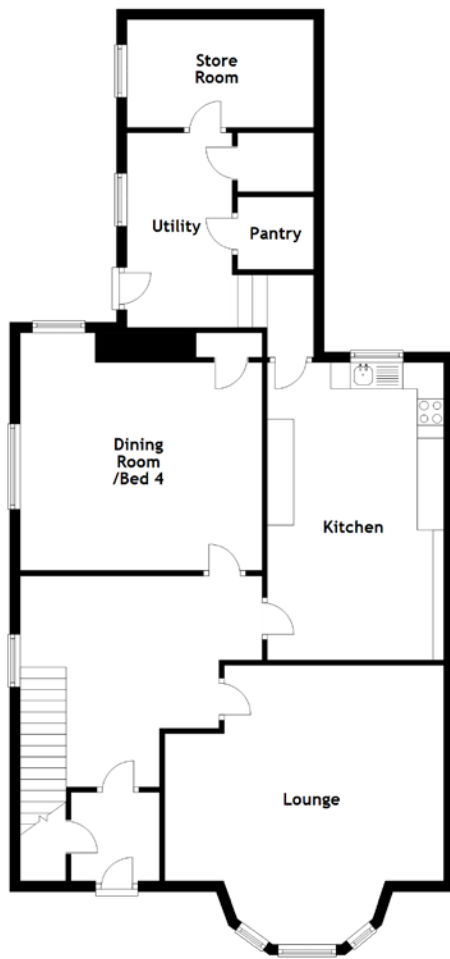


FLOOR PLAN, DIMENSIONS & MAP



Approximate Dimensions
(Taken from the widest point)

Lounge	9.47m (31'1") x 5.30m (17'5")
Dining Room/Bed 4	4.60m (15'1") x 3.95m (13')
Kitchen	5.65m (18'6") x 3.35m (11')
Utility	3.70m (12'2") x 2.00m (6'7")
Store Room	3.55m (11'8") x 2.05m (6'9")
Bedroom 1	4.70m (15'5") x 4.40m (14'5")

Bedroom 2	5.35m (17'7") x 3.60m (11'10")
Bedroom 3	4.50m (14'9") x 3.75m (12'4")
Bathroom	2.55m (8'4") x 2.45m (8')

Gross internal floor area (m²): 165m²
EPC Rating: D

Extras (Included in the sale): Floor coverings, light fittings, blinds and window dressings.

