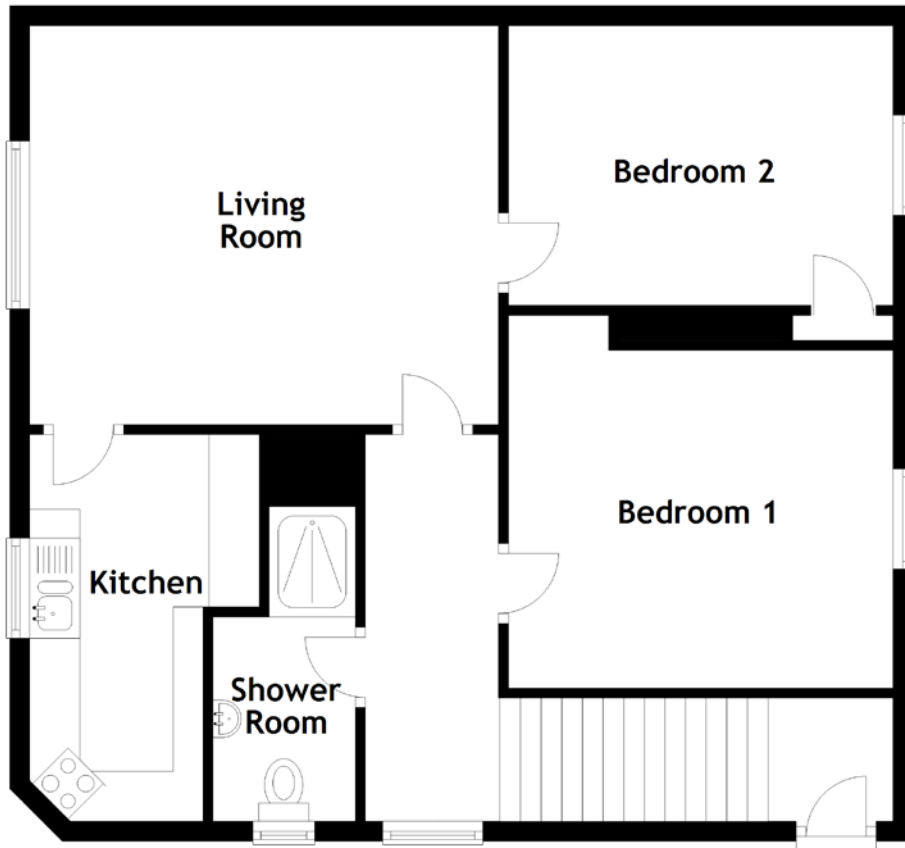


# FLOOR PLAN, DIMENSIONS & MAP



Approximate Dimensions (Taken from the widest point)

Living Room 4.68m (15'4") x 3.98m (13'1")  
Kitchen 3.86m (12'8") x 2.29m (7'6")  
Bedroom 1 3.84m (12'7") x 3.72m (12'2")

Bedroom 2 3.84m (12'7") x 2.79m (9'2")  
Shower Room 3.14m (10'4") x 1.42m (4'8")

Gross internal floor area (m<sup>2</sup>): 66m<sup>2</sup>  
EPC Rating: C

