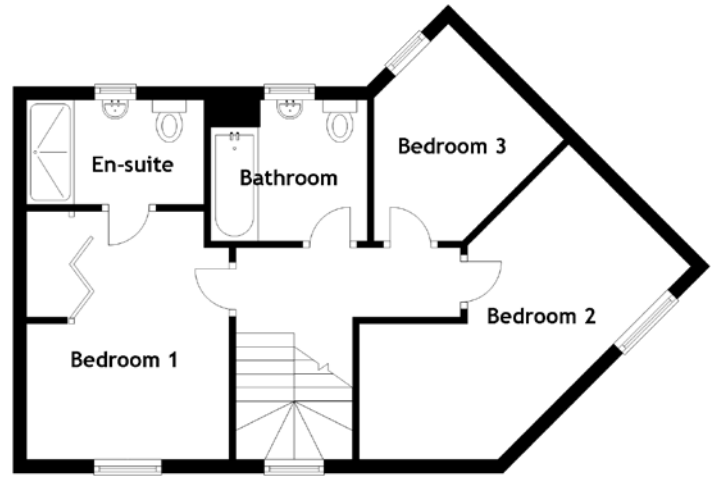
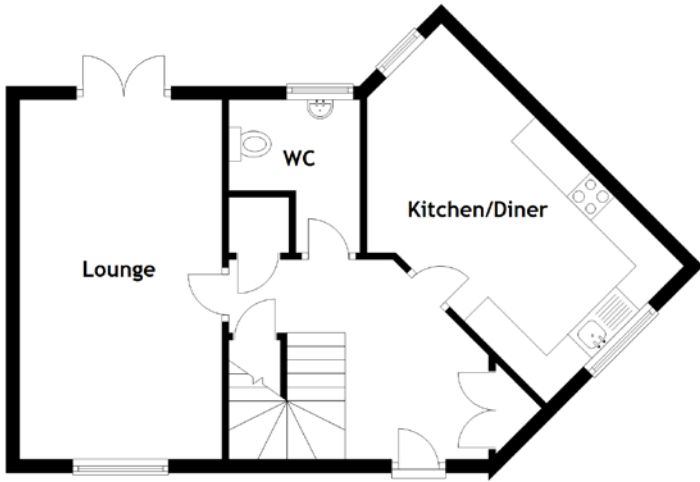


FLOOR PLAN, DIMENSIONS & MAP



Approximate Dimensions
(Taken from the widest point)

Lounge	5.28m (17'4") x 2.99m (9'10")
WC	2.26m (7'5") x 1.94m (6'4")
Kitchen/Diner	5.28m (17'4") x 2.88m (9'5")
Bedroom 1	4.06m (13'4") x 3.04m (10')

En-suite	2.62m (8'7") x 1.73m (5'8")
Bedroom 2	5.53m (18'2") x 2.62m (8'7")
Bedroom 3	3.34m (10'11") x 2.81m (9'3")
Bathroom	2.31m (7'7") x 2.08m (6'10")

Gross internal floor area (m²): 96m²
EPC Rating: C

