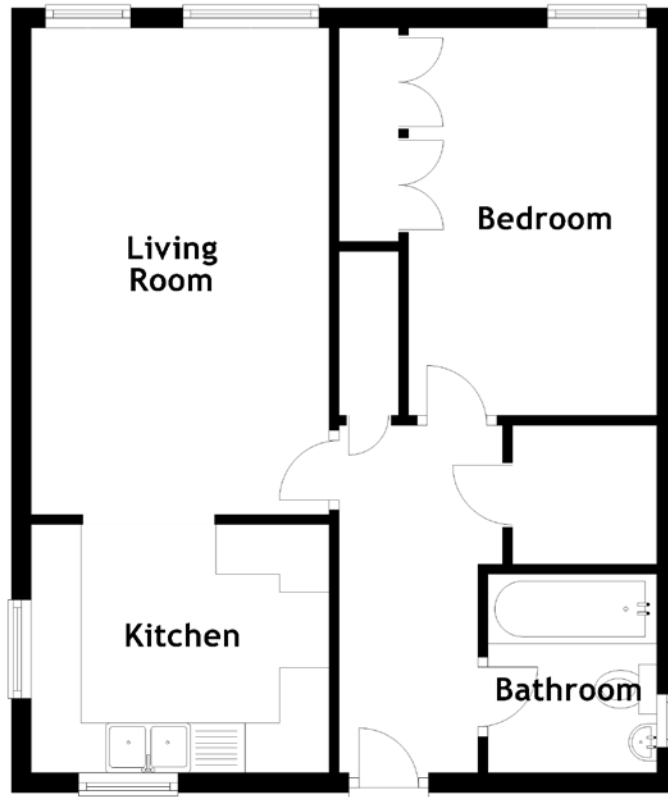


# FLOOR PLAN, DIMENSIONS & MAP



Approximate Dimensions  
(Taken from the widest point)

Living Room  
Kitchen

4.90m (16'1") x 3.00m (9'10")  
3.00m (9'10") x 2.50m (8'2")

Bedroom  
Bathroom

3.90m (12'10") x 2.50m (8'2")  
2.00m (6'7") x 1.70m (5'7")

Gross internal floor area (m<sup>2</sup>): 48m<sup>2</sup>  
EPC Rating: D

