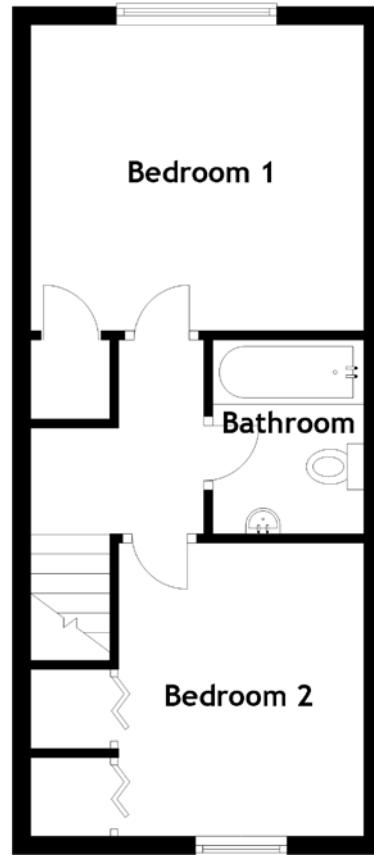
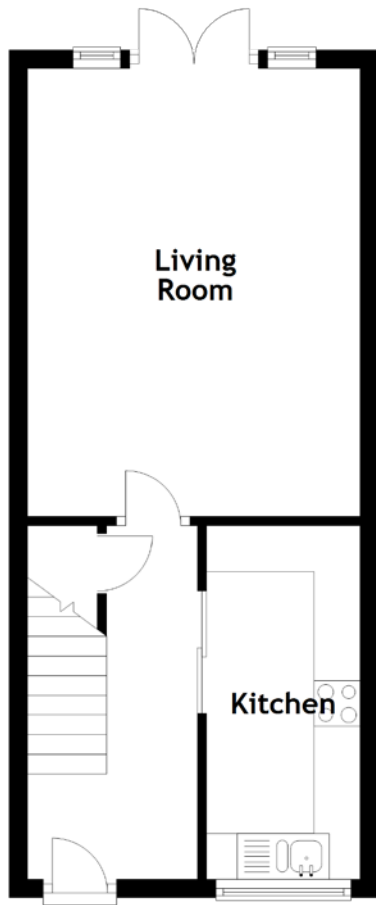


# FLOOR PLAN, DIMENSIONS & MAP



Approximate Dimensions  
(Taken from the widest point)

Living Room 4.88m (16') x 3.62m (11'11")  
Kitchen 3.85m (12'8") x 1.67m (5'6")

Bedroom 1 3.62m (11'11") x 3.33m (10'11")  
Bedroom 2 3.19m (10'6") x 2.65m (8'8")  
Bathroom 2.11m (6'11") x 1.64m (5'5")

Gross internal floor area (m<sup>2</sup>): 64m<sup>2</sup> | EPC Rating: C

