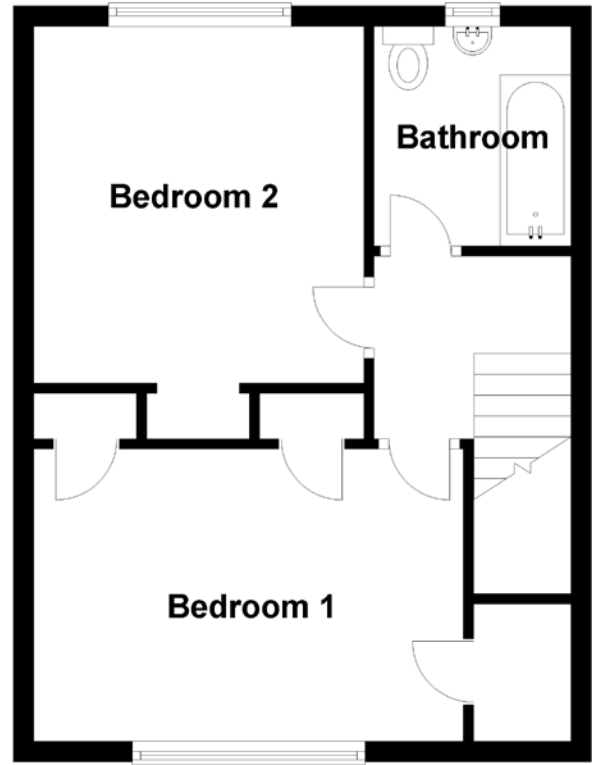
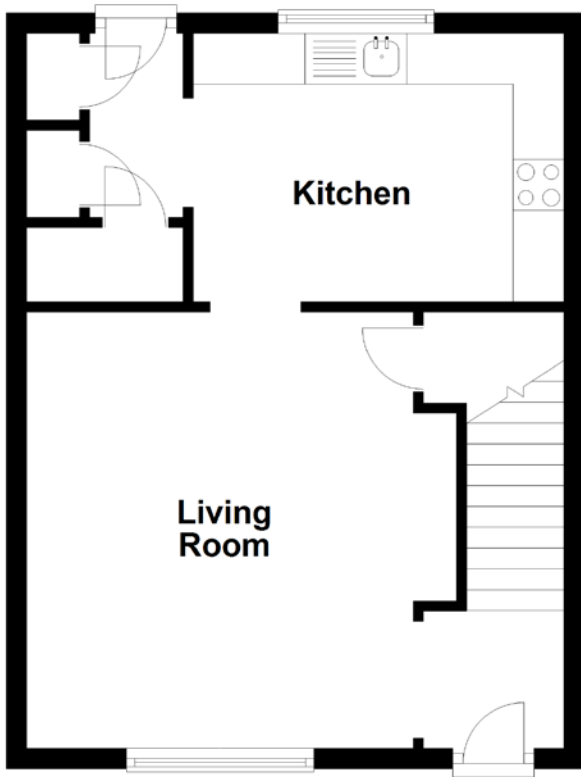


# FLOOR PLAN, DIMENSIONS & MAP



Approximate Dimensions (Taken from the widest point)

Living Room 4.29m (14'1") x 4.23m (13'11")  
Kitchen 3.65m (12') x 2.64m (8'8")  
Bedroom 1 4.27m (14') x 2.87m (9'5")

Bedroom 2 3.51m (11'6") x 3.25m (10'8")  
Bathroom 2.16m (7'1") x 2.00m (6'7")

Gross internal floor area (m<sup>2</sup>): 76m<sup>2</sup>  
EPC Rating: C

