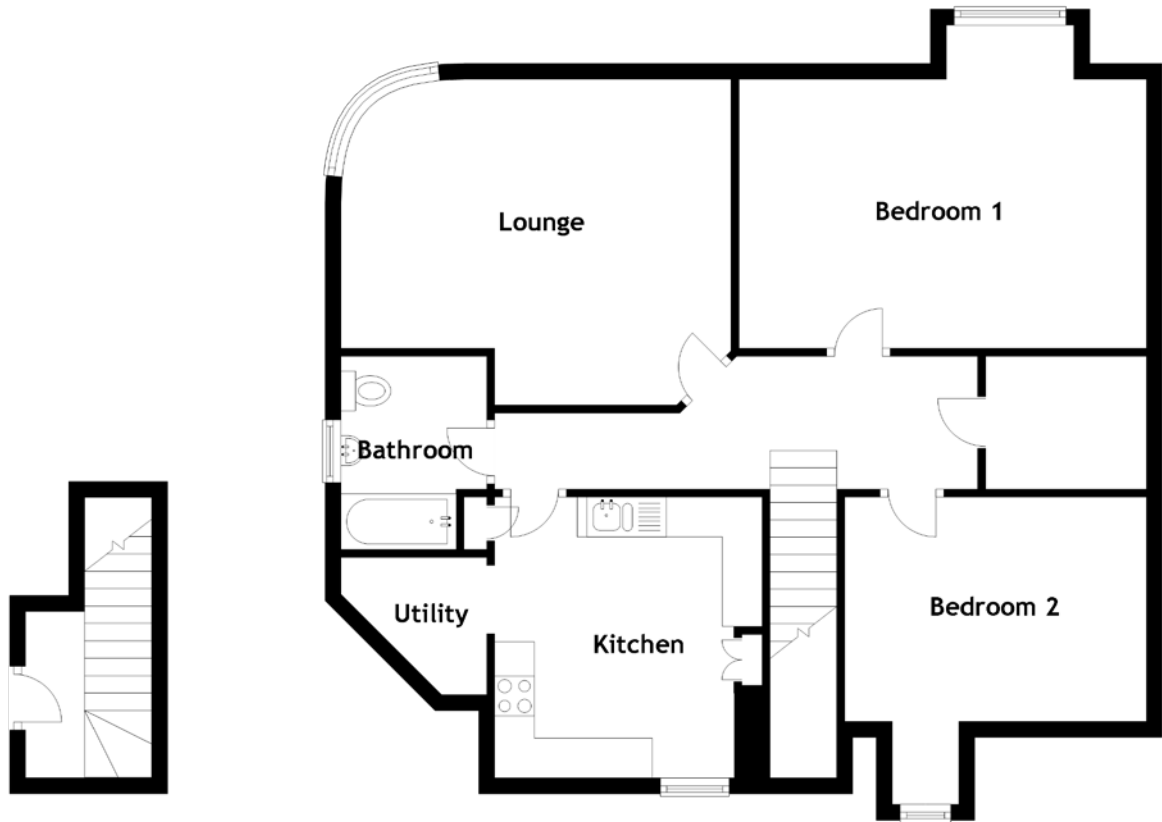


FLOOR PLAN, DIMENSIONS & MAP



Approximate Dimensions
(Taken from the widest point)

Lounge 4.90m (16'1") x 4.09m (13'5")
 Kitchen 3.53m (11'7") x 3.36m (11')
 Utility 1.83m (6') x 1.73m (5'8")

Bedroom 1 5.12m (16'10") x 3.39m (11'1")
 Bedroom 2 3.86m (12'8") x 3.79m (12'5")
 Bathroom 2.43m (8') x 1.83m (6')

Gross internal floor area (m²): 83m²
 EPC Rating: F

