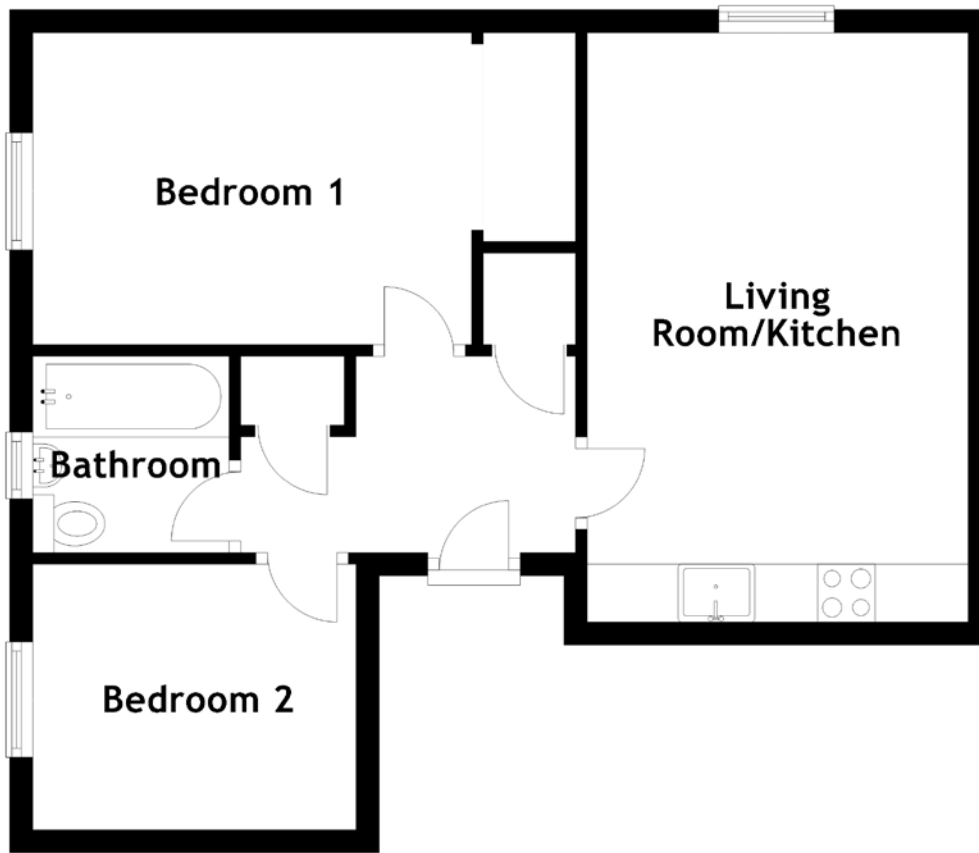


FLOOR PLAN, DIMENSIONS & MAP



Approximate Dimensions
(Taken from the widest point)

Living Room/Kitchen 5.10m (16'9") x 3.30m (10'10")
Bathroom 1.70m (5'7") x 1.70m (5'7")

Bedroom 1 3.80m (12'6") x 2.70m (8'10")
Bedroom 2 2.80m (9'2") x 2.30m (7'7")

Gross internal floor area (m²): 70m²
EPC Rating: C

