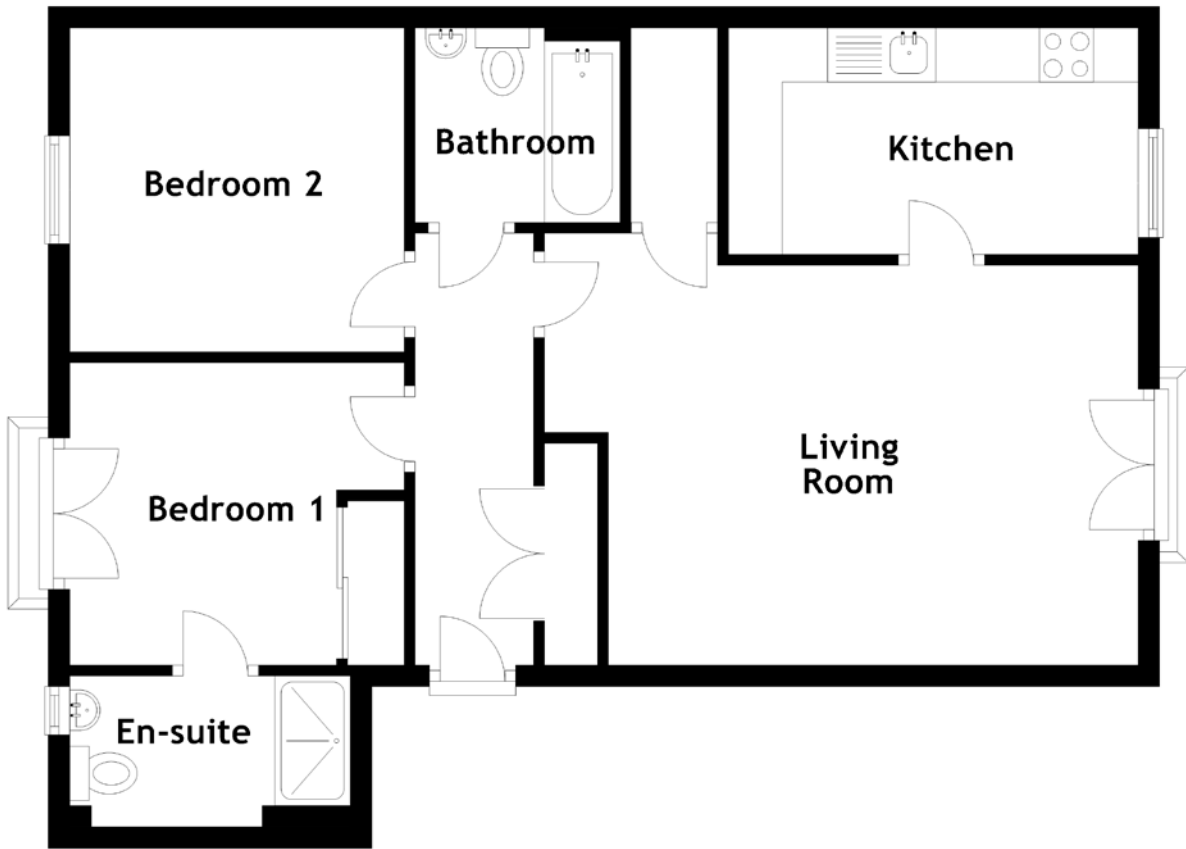


FLOOR PLAN, DIMENSIONS & MAP



Approximate Dimensions
(Taken from the widest point)

Living Room 5.50m (18'1") x 4.00m (13'1")
 Kitchen 3.80m (12'5") x 2.10m (6'11")
 Bathroom 1.90m (6'3") x 1.80m (5'11")

Bedroom 1 3.10m (10'2") x 2.80m (9'2")
 En-suite 2.60m (8'6") x 1.40m (4'7")
 Bedroom 2 3.10m (10'2") x 3.00m (9'10")

Gross internal floor area (m²): 62m²
 EPC Rating: C

