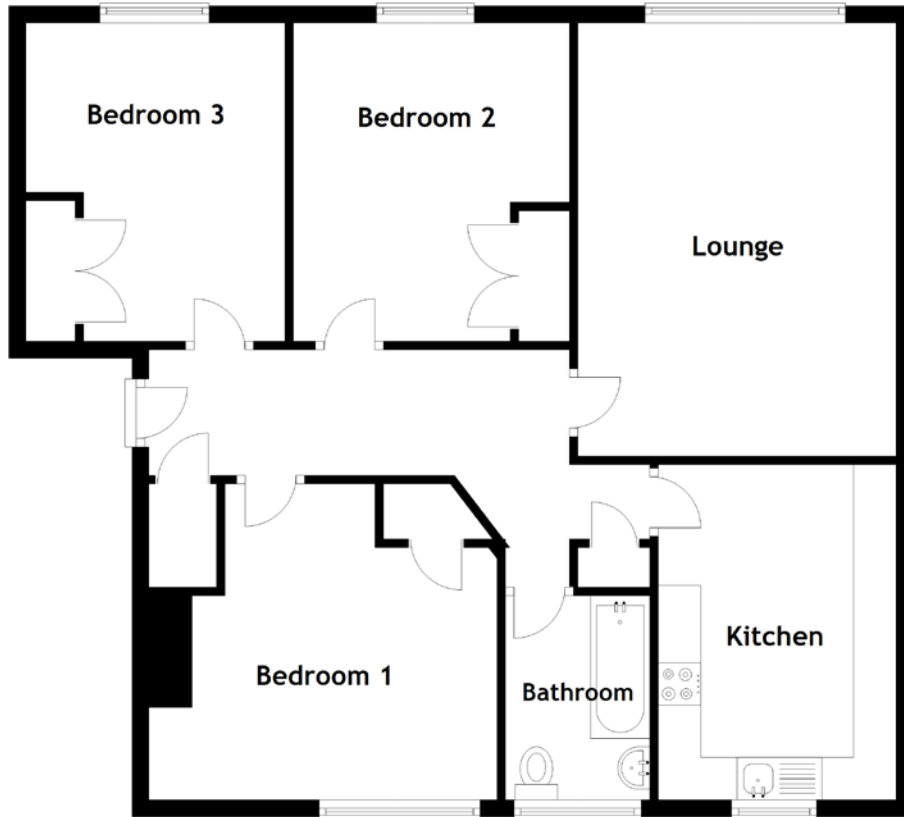


FLOOR PLAN, DIMENSIONS & MAP



Approximate Dimensions (Taken from the widest point)

Lounge	5.10m (16'9") x 3.75m (12'4")
Kitchen	3.95m (12'11") x 2.80m (9'2")
Bathroom	2.40m (7'11") x 1.70m (5'7")
Bedroom 1	4.10m (13'5") x 2.40m (7'11")
Bedroom 2	3.75m (12'4") x 3.25m (10'8")

Bedroom 3

3.75m (12'4") x 3.05m (10')

Gross internal floor area (m²): 77m²
EPC Rating: D

Extras (Included in the sale): Carpers and floor coverings, light fixtures and fittings, blinds, oven and hob.

