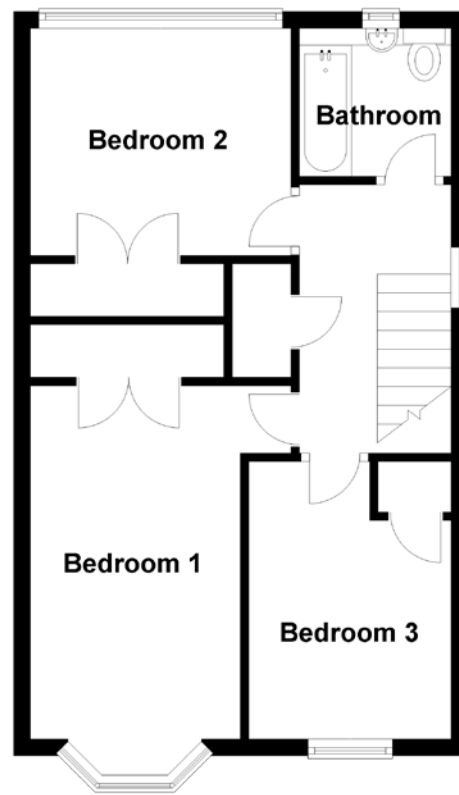
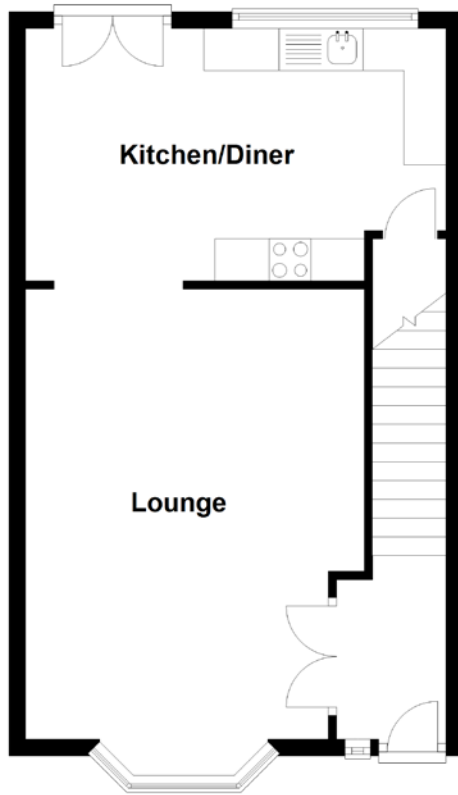


FLOOR PLAN, DIMENSIONS & MAP



Approximate Dimensions
(Taken from the widest point)

| | |
|---------------|--------------------------------|
| Lounge | 5.35m (17'7") x 4.03m (13'3") |
| Kitchen/Diner | 5.00m (16'5") x 3.00m (9'10") |
| Bedroom 1 | 4.20m (13'9") x 3.10m (10'2") |
| Bedroom 2 | 3.10m (10'2") x 2.70m (8'10") |
| Bedroom 3 | 3.30m (10'10") x 2.40m (7'11") |
| Bathroom | 1.95m (6'5") x 1.80m (5'11") |

Gross internal floor area (m²): 87m²
EPC Rating: C

Buyer's Premium Value: £3995.00

Extras (Included in the sale): Freestanding appliances and furniture may be available by separate negotiation. The children's activity slide and frame is not included in the sale.

