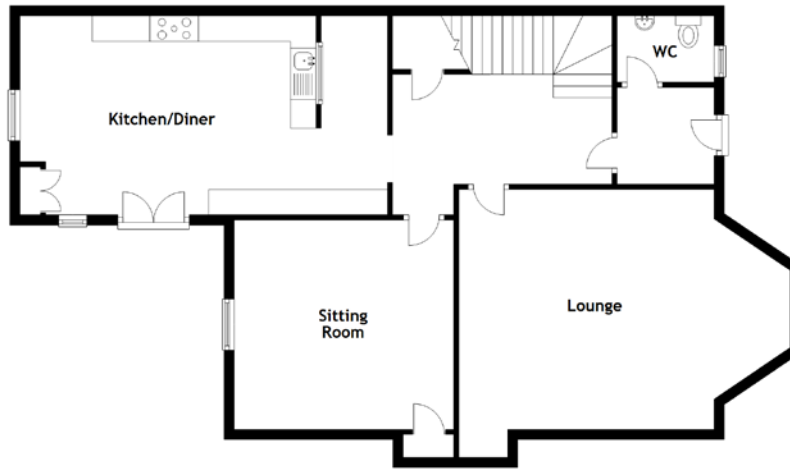


FLOOR PLAN, DIMENSIONS & MAP



Approximate Dimensions (Taken from the widest point)

Lounge 6.50m (21'4") x 4.70m (15'5")
 Sitting Room 4.30m (14'1") x 4.10m (13'5")
 Kitchen/Diner 5.80m (19") x 3.90m (12'10")
 WC 1.90m (6'3") x 1.30m (4'3")
 Bedroom 1 6.30m (20'8") x 4.50m (14'9")

Bedroom 2 4.20m (13'9") x 4.00m (13'1")
 Bedroom 3 4.10m (13'5") x 3.30m (10'10")
 Bedroom 4 3.70m (12'2") x 3.40m (11'2")
 Bathroom 2.80m (9'2") x 2.00m (6'7")

Gross internal floor area (m²): 197m²
 EPC Rating: D

