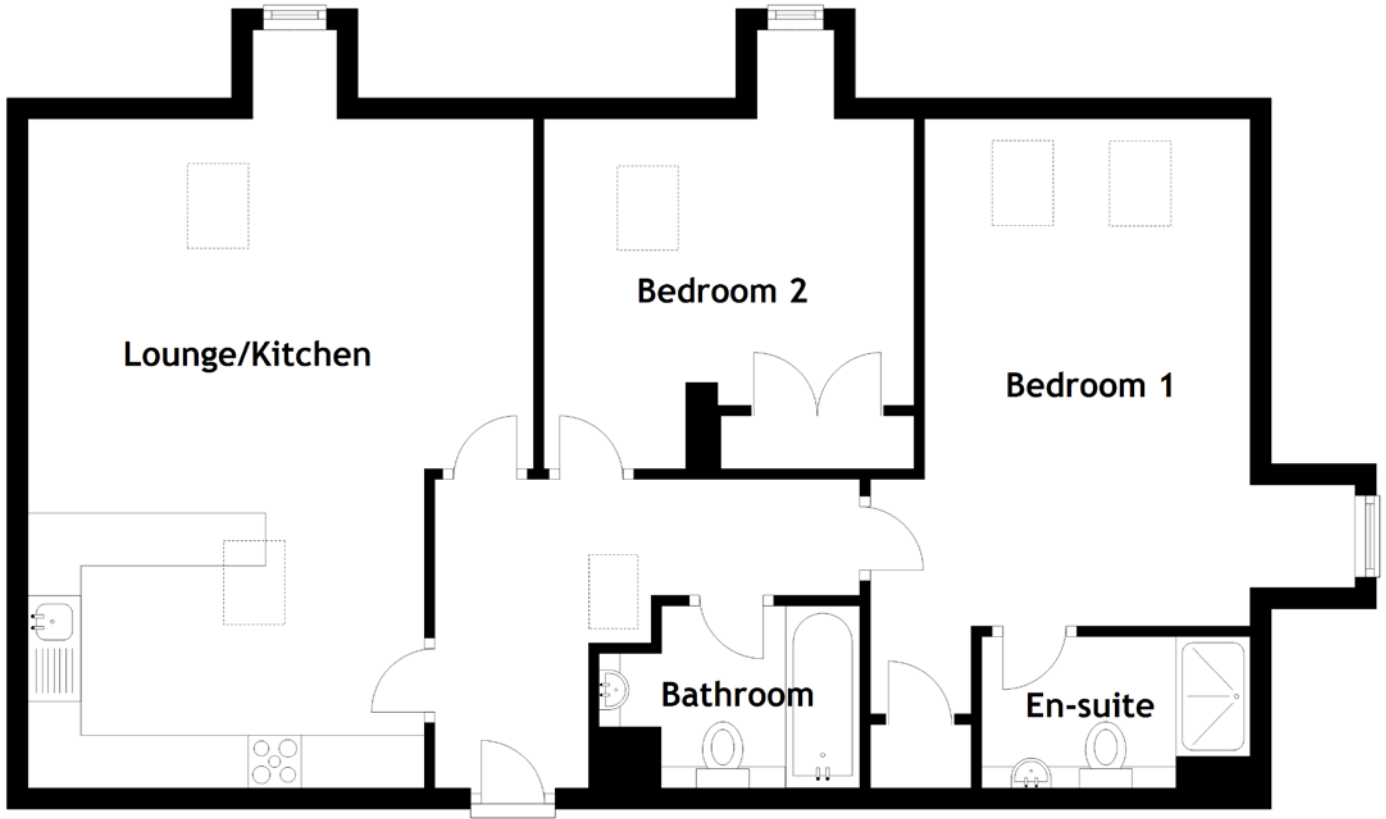


FLOOR PLAN, DIMENSIONS & MAP



Approximate Dimensions
(Taken from the widest point)

Lounge/Kitchen 6.33m (20'9") x 4.78m (15'8")
Bathroom 2.47m (8'1") x 1.72m (5'8")

Bedroom 1 5.65m (18'6") x 3.60m (11'10")
En-suite 2.54m (8'4") x 1.43m (4'8")
Bedroom 2 3.50m (11'6") x 3.31m (10'10")

Gross internal floor area (m²): 81m² | EPC Rating: C

