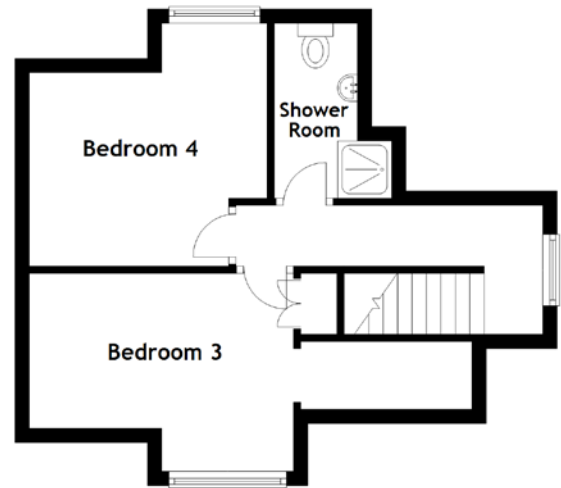
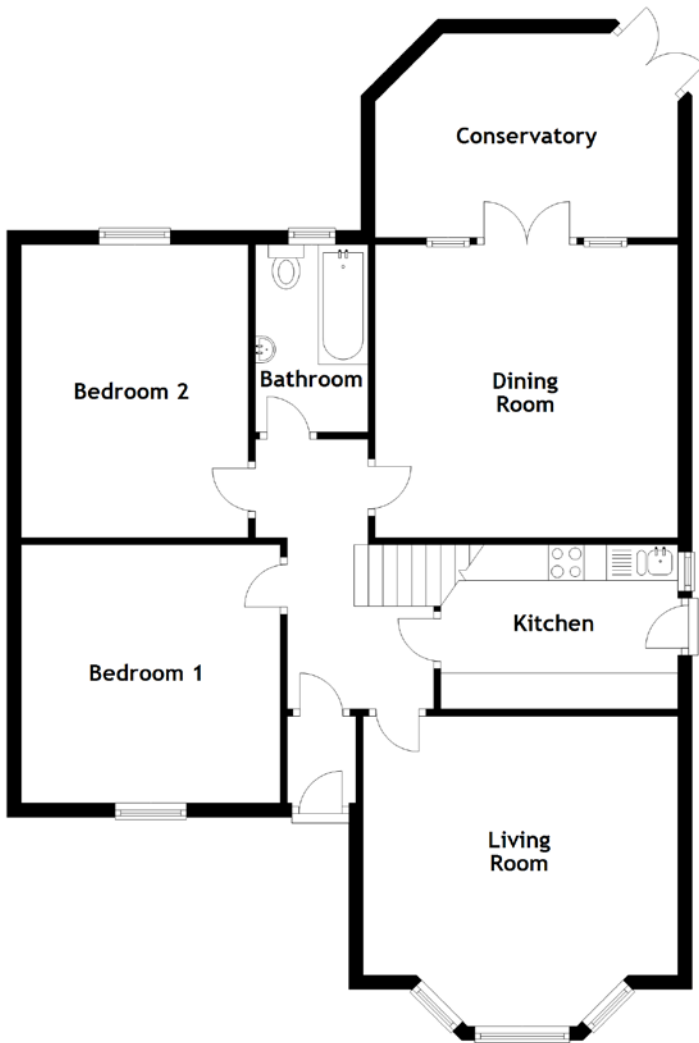


FLOOR PLAN, DIMENSIONS & MAP



Approximate Dimensions
(Taken from the widest point)

Living Room	4.41m (14'6") x 4.35m (14'3")
Kitchen	3.32m (10'11") x 2.30m (7'7")
Dining Room	4.24m (13'11") x 4.11m (13'6")
Conservatory	4.24m (13'11") x 2.86m (9'5")
Bathroom	2.63m (8'8") x 1.58m (5'2")

Bedroom 1	3.63m (11'11") x 3.62m (11'11")
Bedroom 2	4.11m (13'6") x 3.18m (10'5")
Bedroom 3	3.70m (12'2") x 2.77m (9'1")
Bedroom 4	3.39m (11'2") x 3.33m (10'11")
Shower Room	2.44m (8') x 1.64m (5'5")

Gross internal floor area (m²): 114m²
EPC Rating: D

