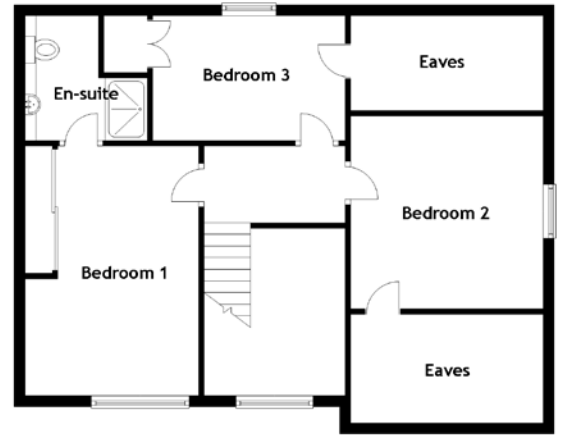
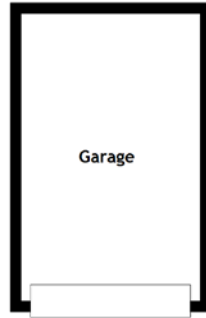
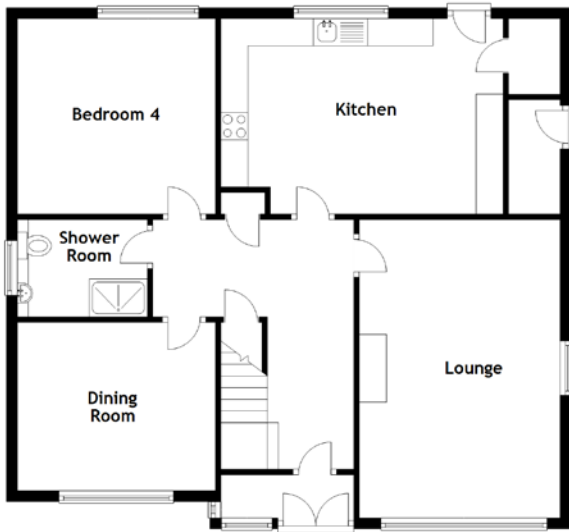


FLOOR PLAN, DIMENSIONS & MAP



Approximate Dimensions
(Taken from the widest point)

Lounge	5.50m (18'1") x 3.70m (12'2")
Kitchen	5.20m (17'1") x 3.60m (11'10")
Dining Room	3.65m (12') x 3.10m (10'2")
Bedroom 4	3.65m (12') x 3.60m (11'10")
Shower Room	2.40m (7'10") x 1.80m (5'11")
Bedroom 1	4.60m (15'1") x 3.20m (10'6")

Bedroom 2	3.70m (12'2") x 3.55m (11'8")
Bedroom 3	3.90m (12'10") x 2.30m (7'7")
Garage	5.30m (17'5") x 3.30m (10'10")

Gross internal floor area (m²): 151vm²
EPC Rating: D

Extras: Carpets and floor coverings, light fixtures and fittings, curtains and blinds.

