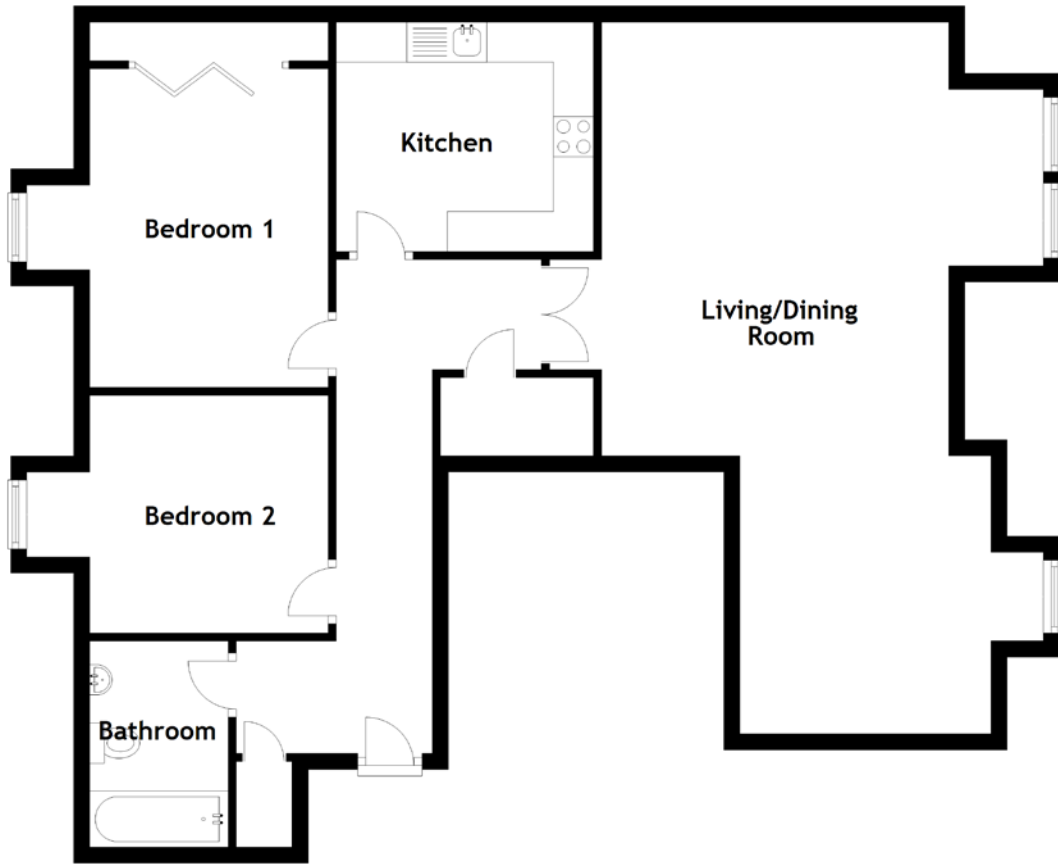


FLOOR PLAN, DIMENSIONS & MAP



Approximate Dimensions (Taken from the widest point)

Living/Dining Room 8.87m (29'1") x 5.51m (18'1")
 Kitchen 3.21m (10'6") x 2.86m (9'5")
 Bedroom 1 3.97m (13') x 3.76m (12'4")

Bedroom 2 3.76m (12'4") x 2.96m (9'9")
 Bathroom 2.57m (8'5") x 1.73m (5'8")

Gross internal floor area (m²): 90m²
 EPC Rating: B

