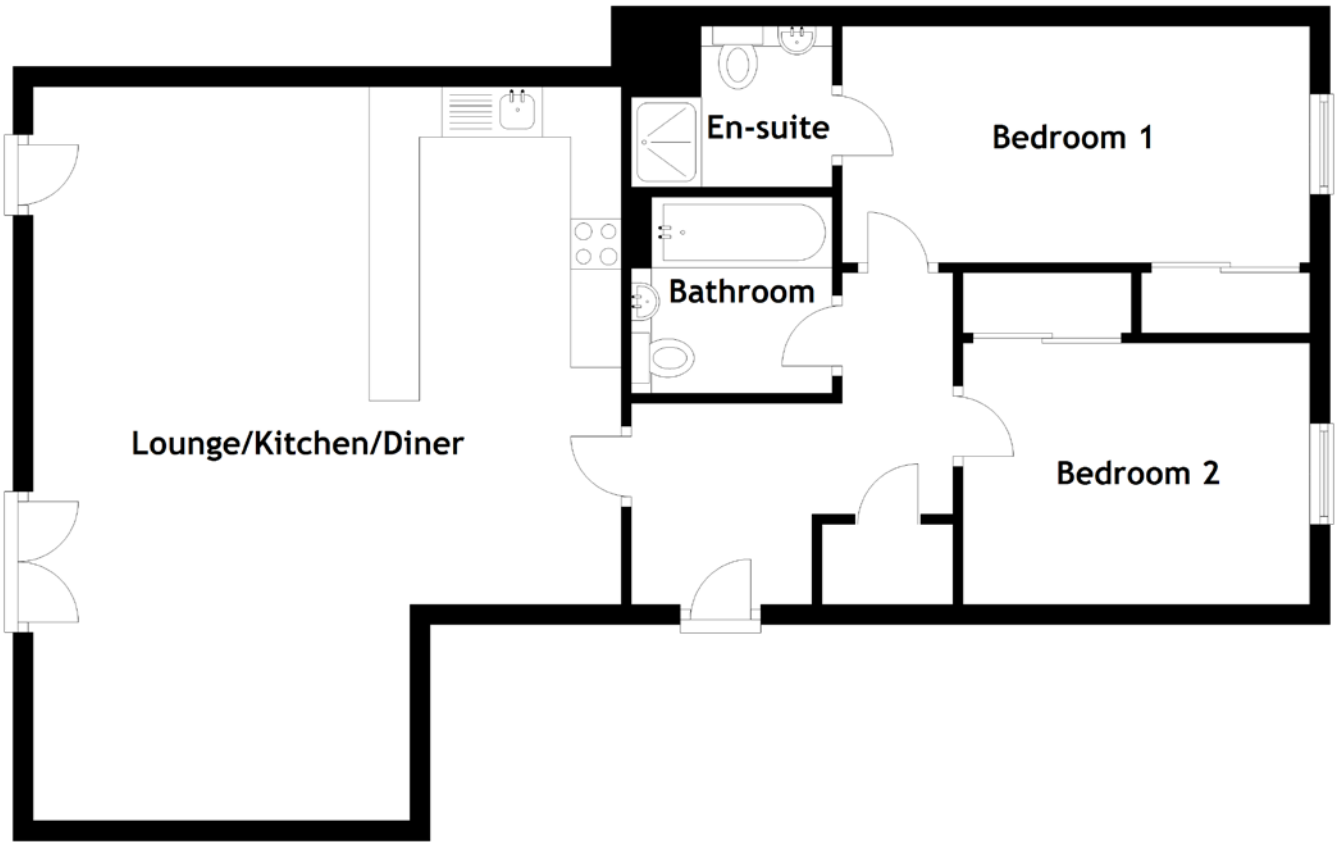


FLOOR PLAN, DIMENSIONS & MAP



Approximate Dimensions (Taken from the widest point)

Lounge/Kitchen/Diner 7.30m (23'11") x 5.85m (19'2")
 Bedroom 1 4.65m (15'3") x 2.35m (7'9")
 En-suite 2.00m (6'7") x 1.60m (5'3")

Bedroom 2 3.45m (11'4") x 2.60m (8'6")
 Bathroom 2.00m (6'7") x 1.95m (6'5")

Gross internal floor area (m²): 71m²
 EPC Rating: C

