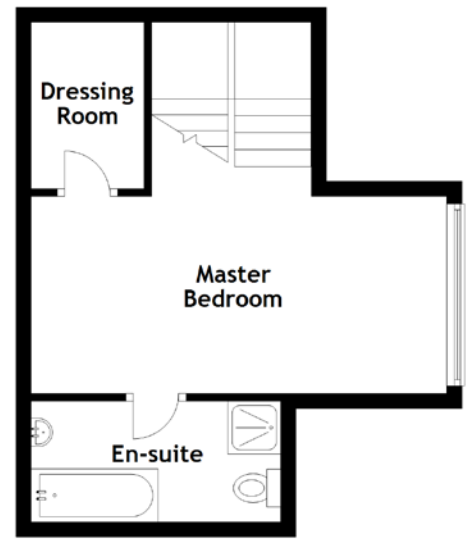
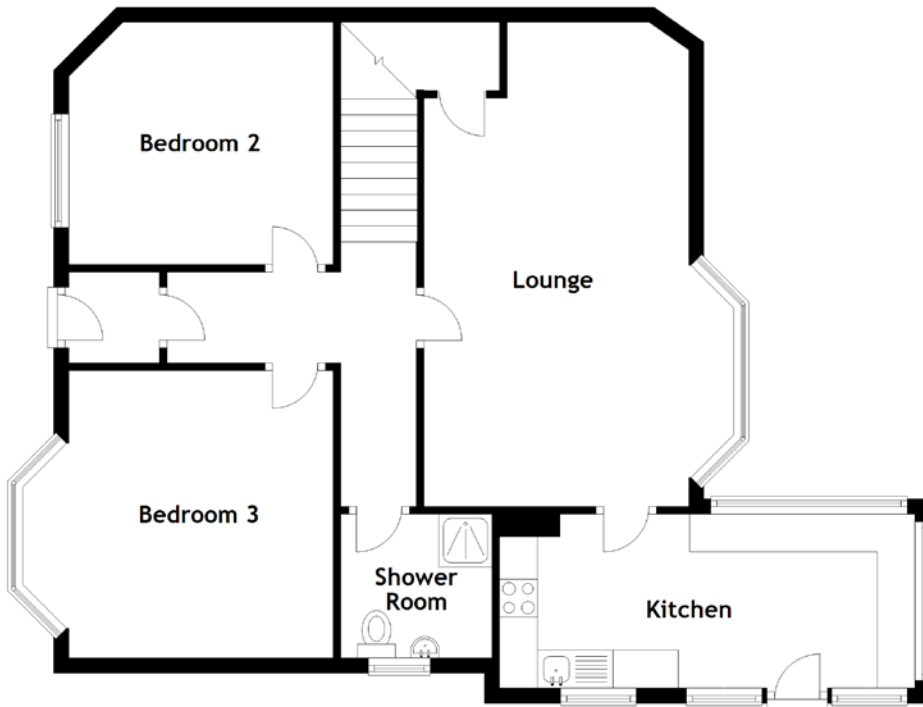


FLOOR PLAN, DIMENSIONS & MAP



Approximate Dimensions (Taken from the widest point)

Ground Floor

Lounge	6.40m (21') x 3.50m (11'6")
Kitchen	5.50m (18') x 2.30m (7'7")
Shower Room	2.00m (6'7") x 1.90m (6'3")
Bedroom 2	3.50m (11'6") x 3.20m (10'6")
Bedroom 3	3.80m (12'6") x 3.50m (11'6")

First Floor

Master Bedroom	5.50m (18'1") x 2.60m (8'7")
Dressing Room	2.20m (7'3") x 1.50m (4'11")
En-suite	3.30m (10'10") x 1.60m (5'3")

Gross internal floor area (m²): 106m²

EPC Rating: C

