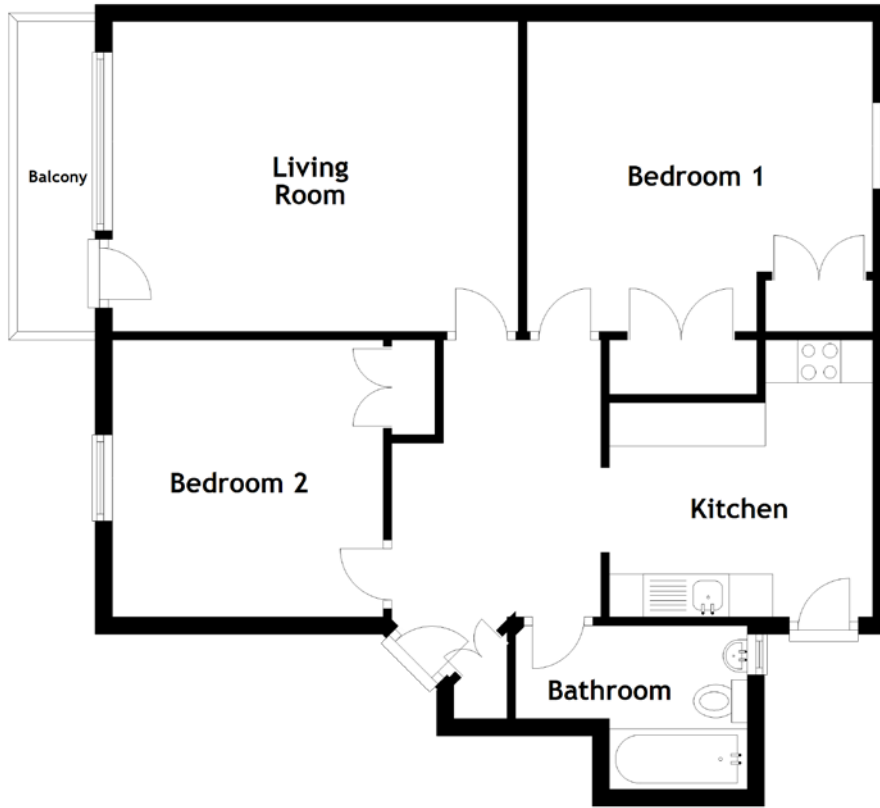


# FLOOR PLAN, DIMENSIONS & MAP



Approximate Dimensions  
(Taken from the widest point)

Living Room 4.72m (15'6") x 3.60m (11'10")  
Balcony 3.60m (11'10") x 0.90m (3")  
Kitchen 3.22m (10'7") x 3.06m (10')

Bedroom 1 4.02m (13'2") x 3.60m (11'10")  
Bedroom 2 3.37m (11'1") x 3.22m (10'7")  
Bathroom 2.69m (8'10") x 1.90m (6'3")

Gross internal floor area (m<sup>2</sup>): 71m<sup>2</sup>  
EPC Rating: C

