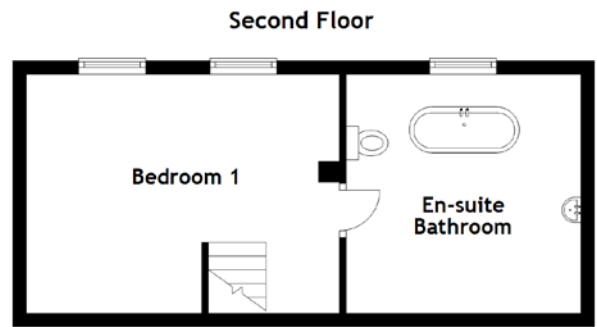
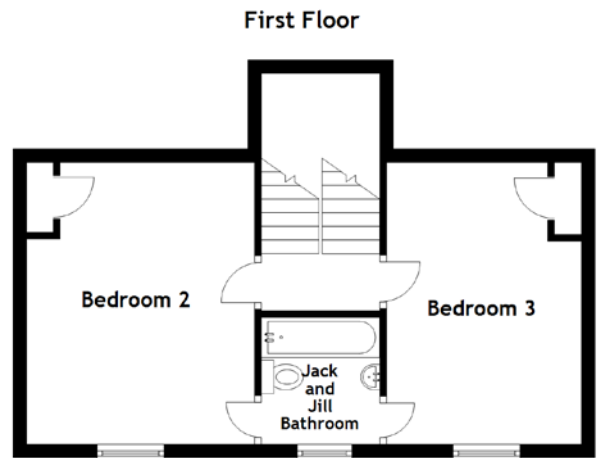
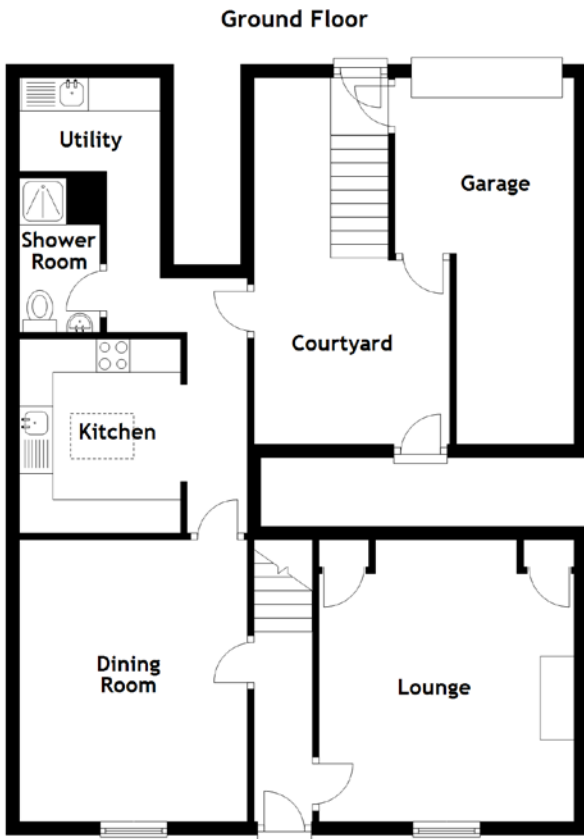


FLOOR PLAN, DIMENSIONS & MAP



Approximate Dimensions (Taken from the widest point)

Ground Floor	
Lounge	4.30m (14'1") x 3.80m (12'6")
Dining Room	4.20m (13'9") x 3.40m (11'2")
Kitchen	2.90m (9'6") x 2.40m (7'10")
Shower Room	2.30m (7'7") x 1.20m (3'11")
Utility	2.10m (6'11") x 1.40m (4'7")

First Floor	
Bedroom 3	4.30m (14'1") x 2.90m (9'6")
Bedroom 2	4.30m (14'1") x 3.40m (11'2")

Jack and Jill Bathroom 2.50m (8'2") x 2.00m (6'7")

Second Floor	
En-suite Bathroom	3.60m (11'10") x 3.50m (11'6")
Bedroom 1	5.10m (16'9") x 3.60m (11'10")

Gross internal floor area (m²): 118m²

EPC Rating: E

Extras: All fitted floor coverings, blinds, curtains and light fittings are included unless otherwise stated.

