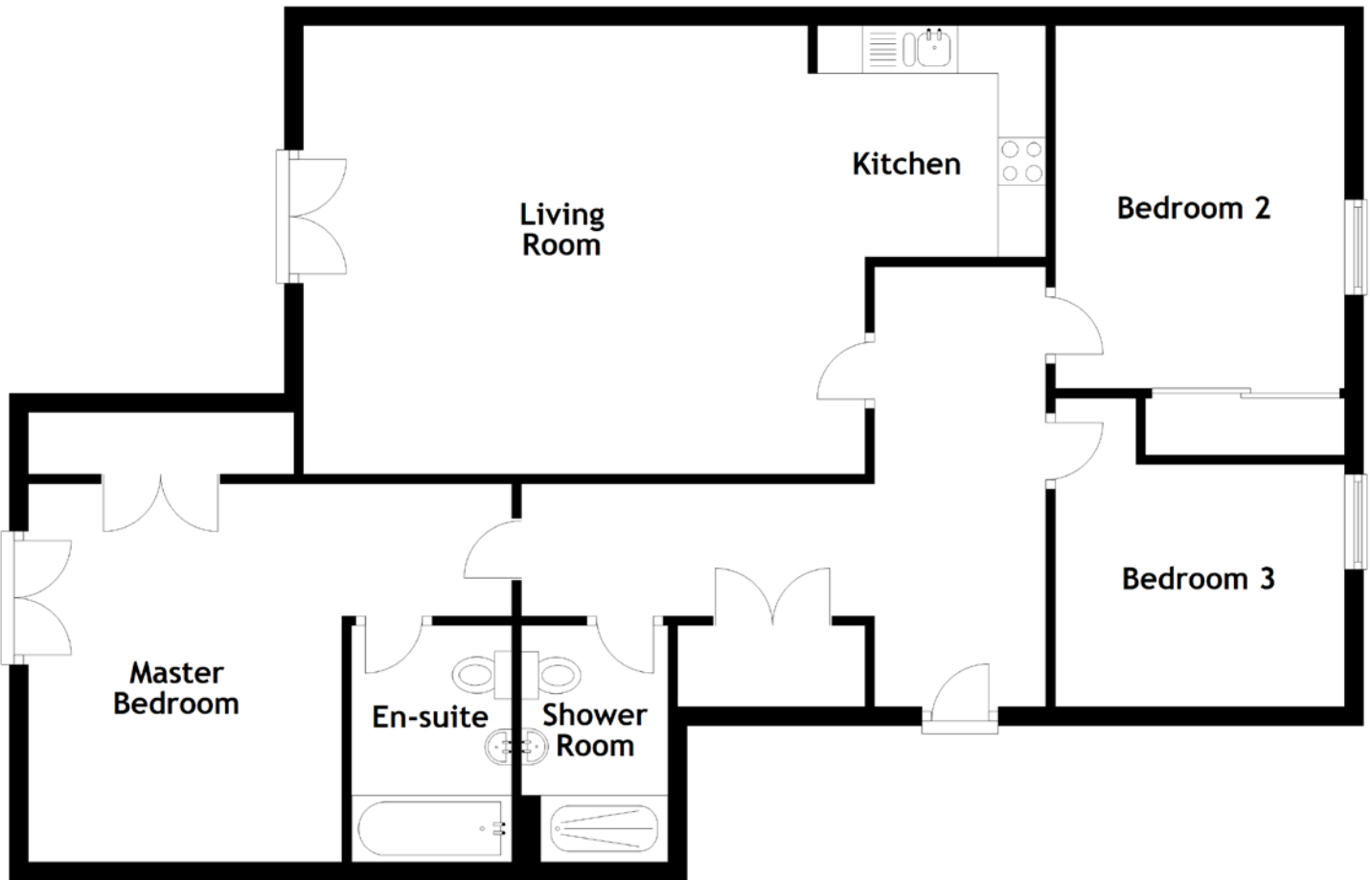


FLOOR PLAN, DIMENSIONS & MAP



Approximate Dimensions (Taken from the widest point)

Living Room	5.90m (19'4") x 4.71m (15'5")
Kitchen	2.43m (8') x 2.40m (7'10")
Master Bedroom	5.08m (16'8") x 3.97m (13')
En-suite	2.48m (8'2") x 1.69m (5'6")

Bedroom 2	3.81m (12'6") x 3.04m (10')
Bedroom 3	3.24m (10'8") x 3.04m (10')
Shower Room	2.48m (8'2") x 1.54m (5'1")

Gross internal floor area (m²): 97m²
EPC Rating: B

