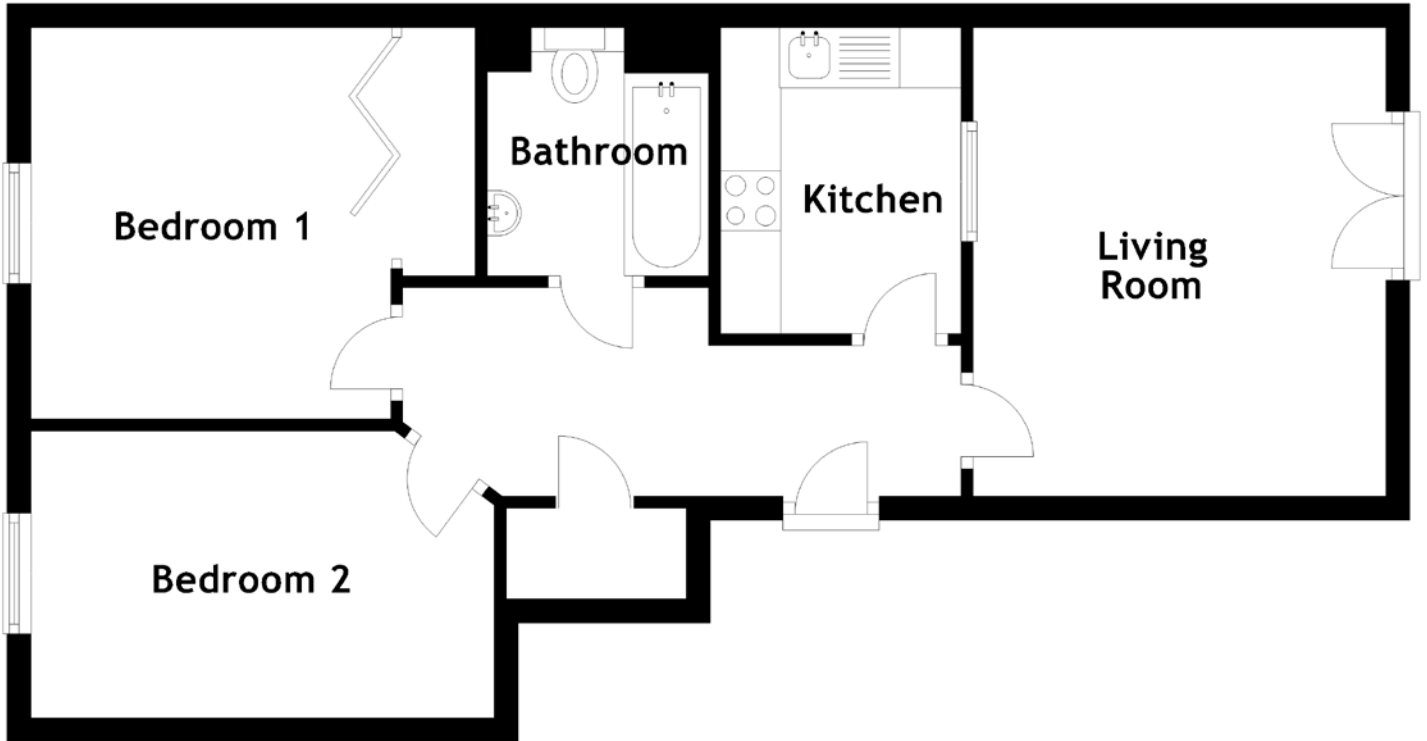


# FLOOR PLAN, DIMENSIONS & MAP



Approximate Dimensions (Taken from the widest point)

Living Room 3.89m (12'9") x 3.43m (11'3")  
 Kitchen 2.54m (8'4") x 2.00m (6'7")  
 Bathroom 2.06m (6'9") x 1.84m (6')

Bedroom 1 3.25m (10'8") x 2.99m (9'10")  
 Bedroom 2 3.85m (12'8") x 2.38m (7'10")

Gross internal floor area (m<sup>2</sup>): 51m<sup>2</sup>  
 EPC Rating: B

