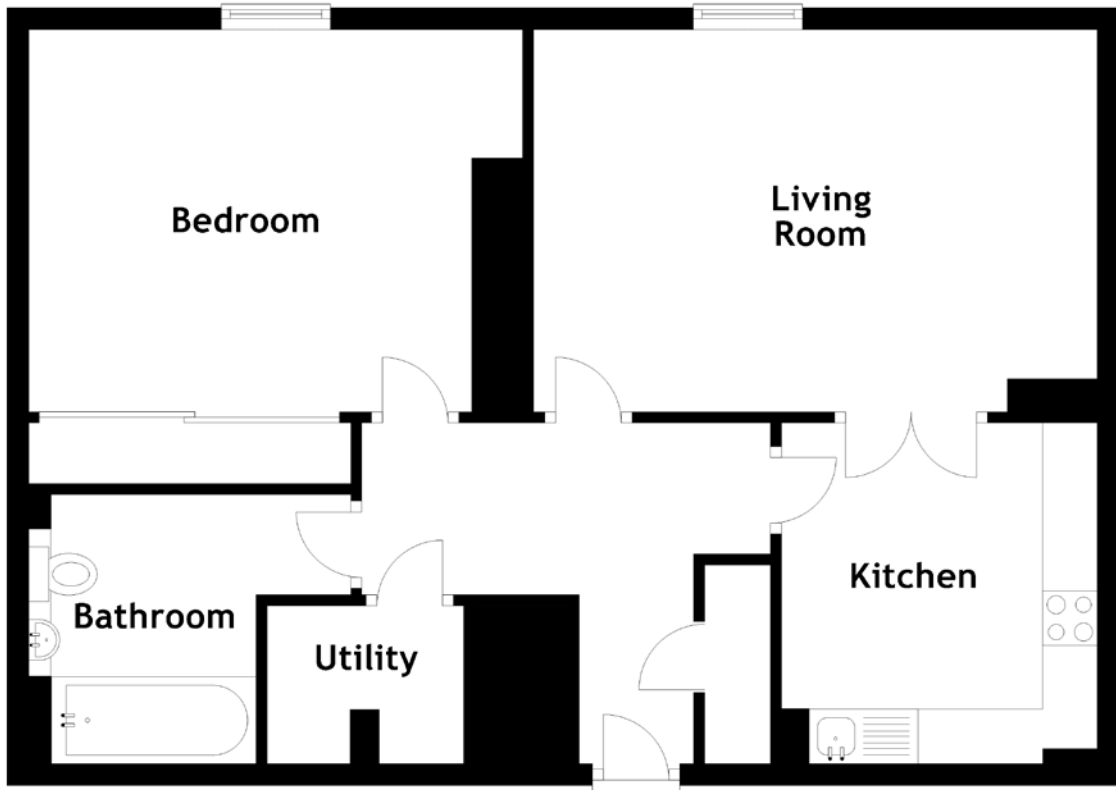


FLOOR PLAN, DIMENSIONS & MAP



Approximate Dimensions (Taken from the widest point)

Living Room 5.16m (16'11") x 3.50m (11'6")
 Kitchen 3.12m (10'3") x 2.89m (9'6")
 Utility 1.80m (5'11") x 1.45m (4'9")

Bedroom 4.52m (14'10") x 3.50m (11'6")
 Bathroom 2.95m (9'8") x 2.46m (8'1")

Gross internal floor area (m²): 68m²
 EPC Rating: C

