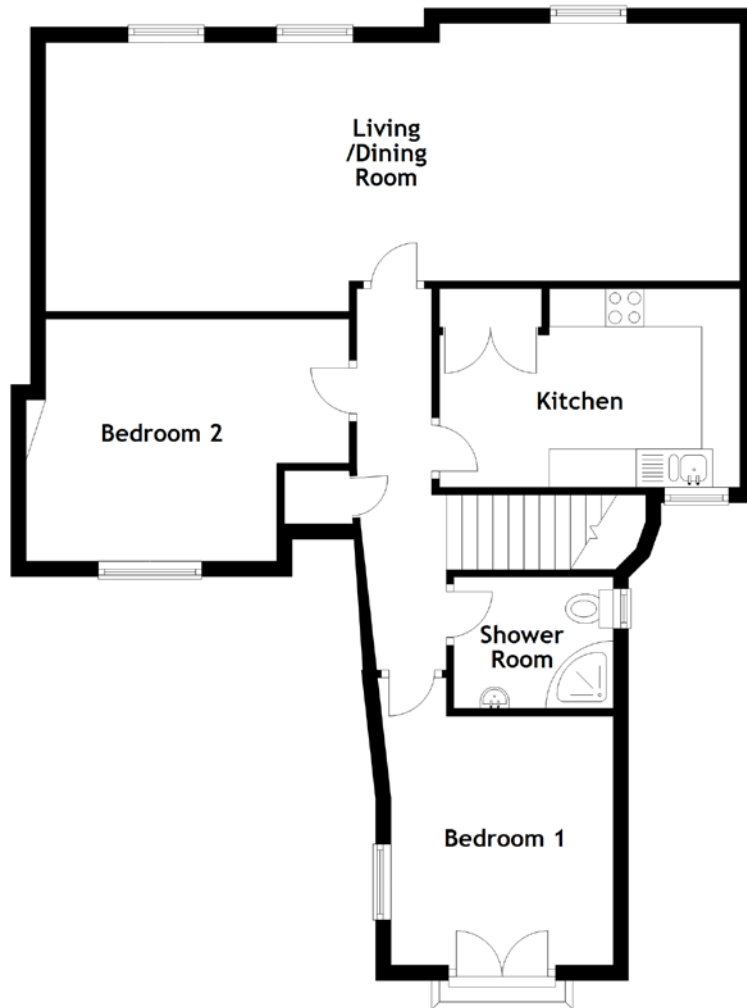


# FLOOR PLAN, DIMENSIONS & MAP



Approximate Dimensions (Taken from the widest point)

Living/Dining Room 9.10m (29'10") x 3.77m (12'4")  
 Kitchen 3.94m (12'11") x 2.60m (8'6")  
 Bedroom 1 3.81m (12'6") x 3.02m (9'11")

Bedroom 2 4.23m (13'11") x 3.17m (10'5")  
 Shower Room 2.09m (6'10") x 1.72m (5'8")

Gross internal floor area (m<sup>2</sup>): 85m<sup>2</sup>  
 EPC Rating: D

