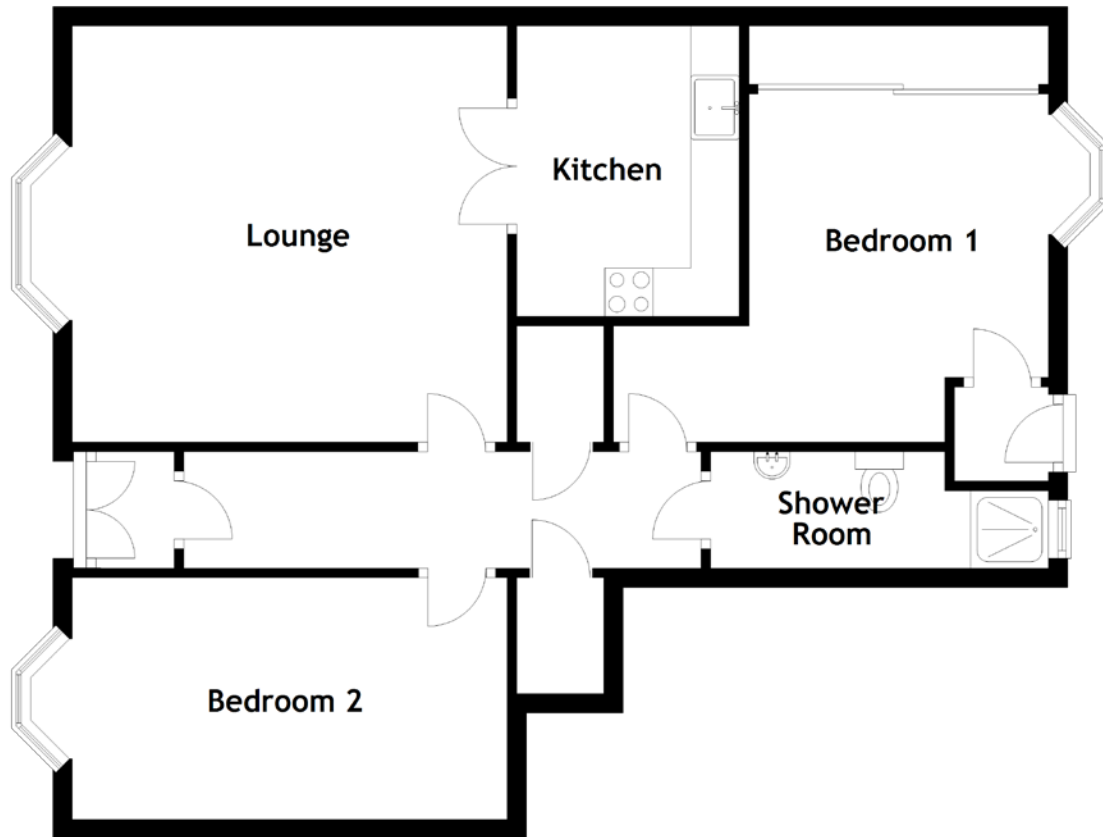


FLOOR PLAN, DIMENSIONS & MAP



Approximate Dimensions (Taken from the widest point)

Kitchen 3.00m (9'10") x 2.30m (7'7")
 Lounge 4.50m (14'9") x 4.30m (14'1")
 Bedroom 1 4.50m (14'9") x 3.60m (11'10")

Bedroom 2 4.50m (14'9") x 2.50m (8'2")
 Shower Room 3.50m (11'6") x 1.20m (3'11")

Gross internal floor area (m²): 75m²
 EPC Rating: C

