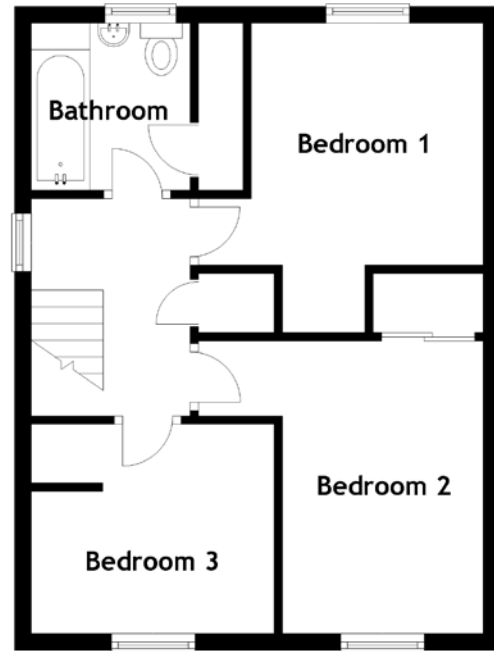
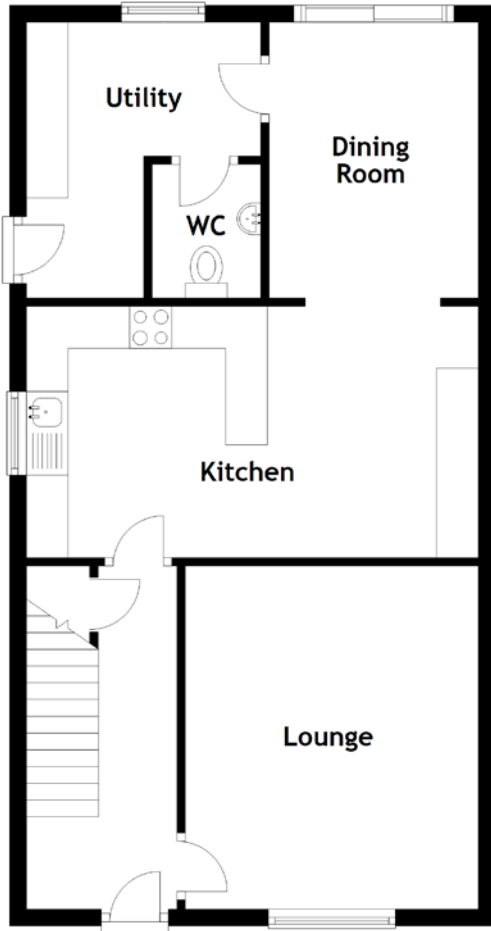


FLOOR PLAN, DIMENSIONS & MAP



Approximate Dimensions (Taken from the widest point)

Lounge	4.10m (13'5") x 3.50m (11'6")
Kitchen	5.40m (17'9") x 3.00m (9'10")
Dining Room	3.30m (10'10") x 2.50m (8'2")
Utility	3.30m (10'10") x 2.50m (8'2")
WC	1.60m (5'3") x 1.30m (4'3")

Bedroom 1	3.70m (12'2") x 3.40m (11'2")
Bedroom 2	3.50m (11'6") x 3.40m (11'2")
Bedroom 3	2.90m (9'6") x 2.50m (8'2")
Bathroom	2.00m (6'7") x 1.90m (6'3")

Gross internal floor area (m²): 96m²
EPC Rating: C

