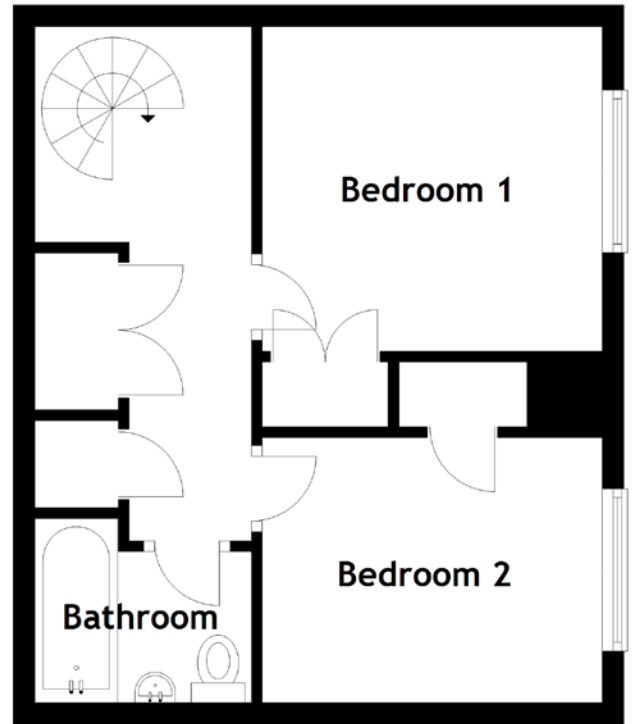
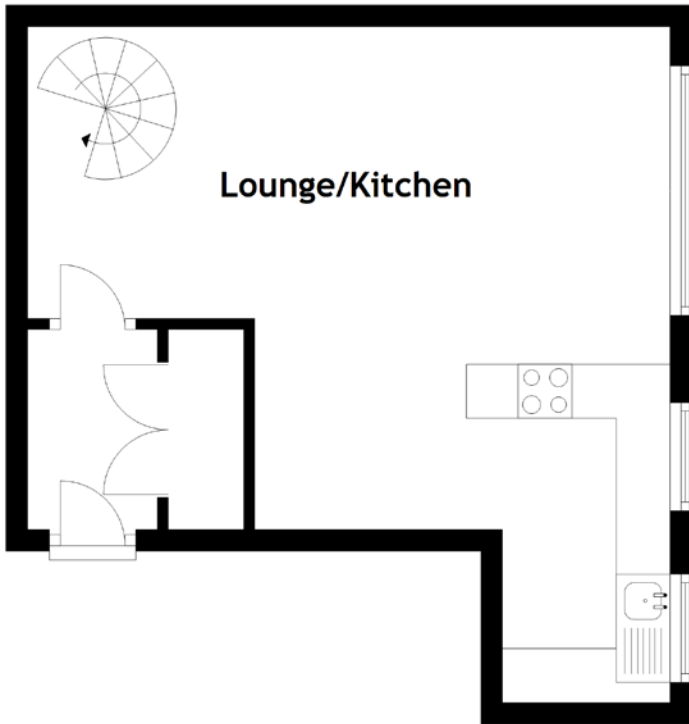


# FLOOR PLAN, DIMENSIONS & MAP



Approximate Dimensions  
(Taken from the widest point)

Lounge/Kitchen 6.25m (20'6") x 5.95m (19'6")  
Bedroom 1 3.00m (9'10") x 2.90m (9'6")

Bedroom 2 3.15m (10'4") x 2.45m (8')  
Bathroom 1.70m (5'7") x 1.70m (5'7")

Gross internal floor area (m<sup>2</sup>): 59m<sup>2</sup>  
EPC Rating: E

